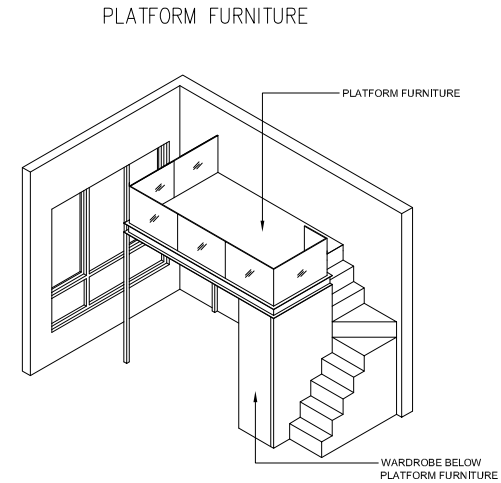
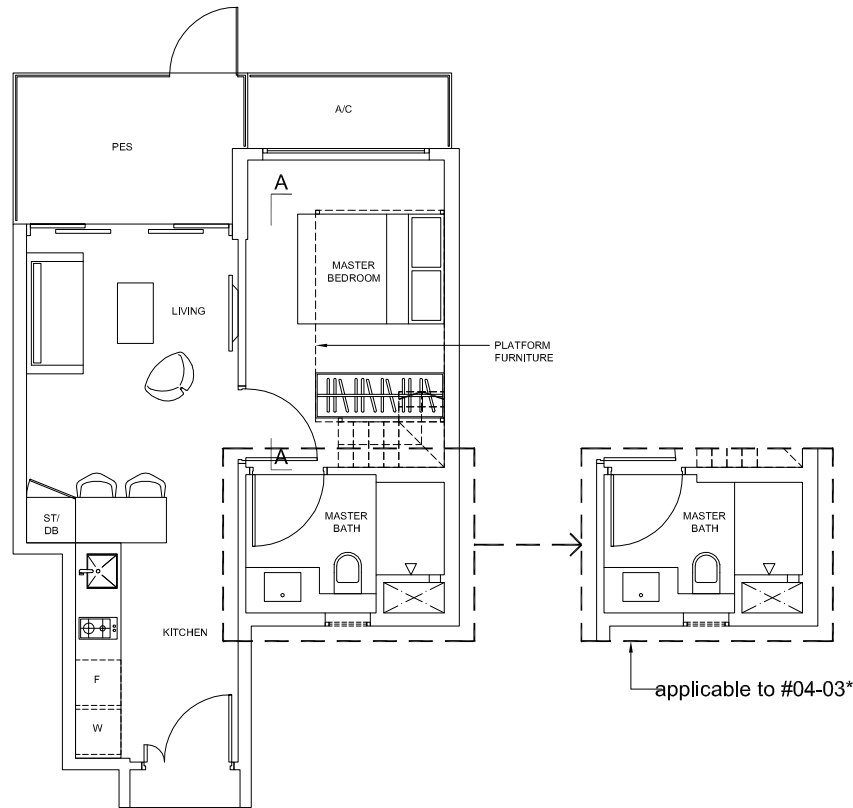


# 1-Bedroom

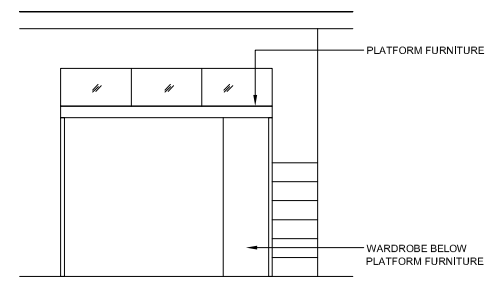
## TYPE A-1G

Area: 46 sq m (include 3 sq m A/C LEDGE, 6 sq m PES)

Unit(s): #04-03\*, #04-04, #04-09\*, #04-14



ISOMETRIC VIEW +



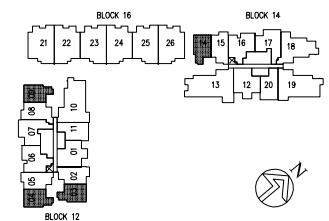
SECTION A-A

### NOTE:

\* units in mirror image

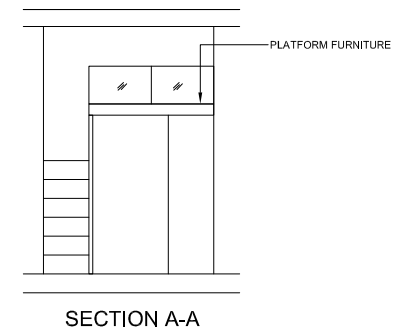
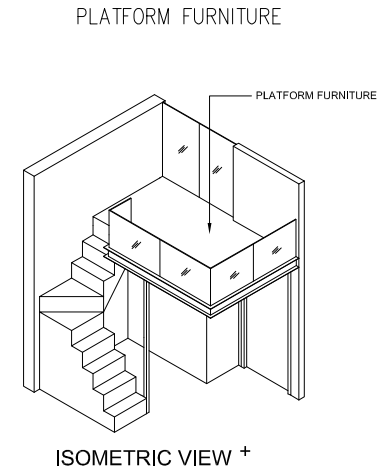
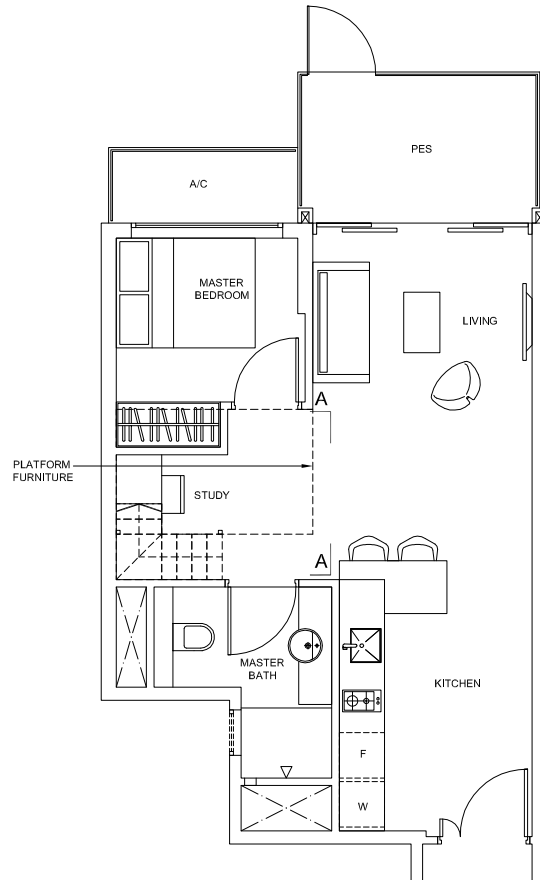
+ isometric views have excluded railings drawings

*Plans are subject to change as may be required or approved by the relevant authorities. These are not drawn to scale and are for the purpose of visual presentation only. Indicated areas are estimates only and subject to final survey.*



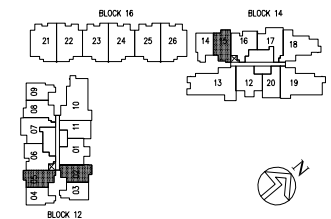
# 1-Bedroom + Study

TYPE AS-1G  
 Area: 51 sq m (include 3 sq m A/C LEDGE, 7 sq m PES)  
 Unit(s): #04-02\*, #04-05, #04-15



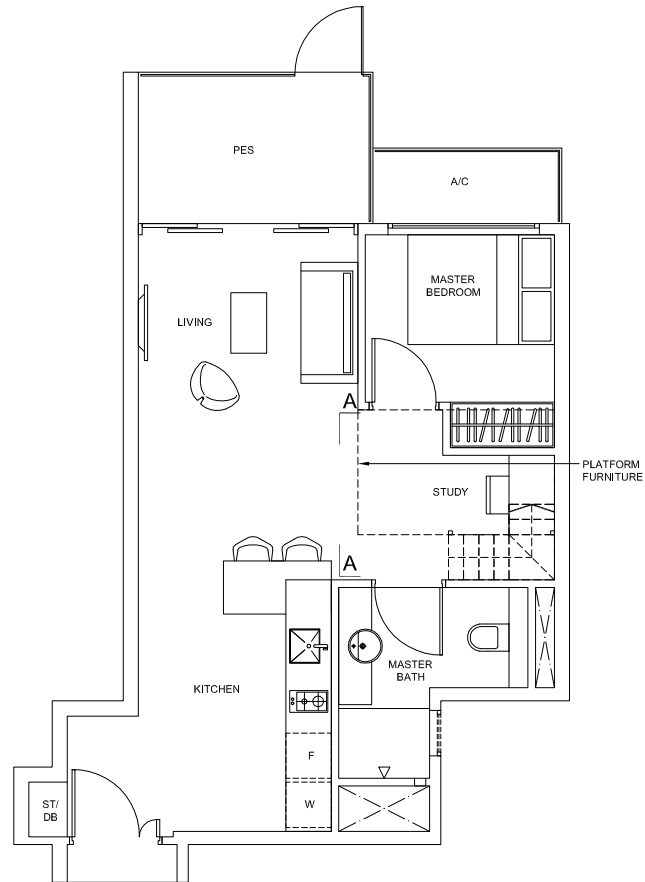
**NOTE:**  
 \* units in mirror image  
 + isometric views have excluded railings drawings

*Plans are subject to change as may be required or approved by the relevant authorities. These are not drawn to scale and are for the purpose of visual presentation only. Indicated areas are estimates only and subject to final survey.*

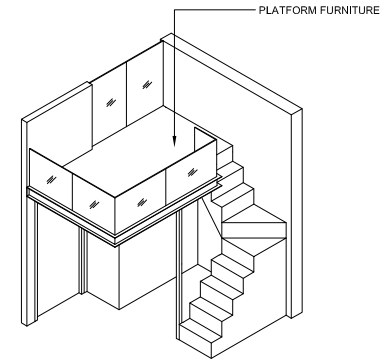


# 1-Bedroom + Study

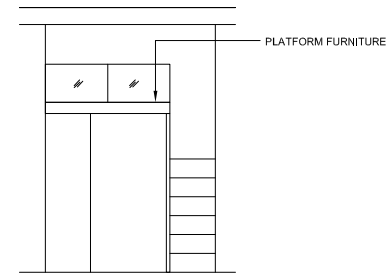
TYPE AS-2G  
Area: 53 sq m (include 3 sq m A/C LEDGE, 7 sq m PES)  
Unit(s): #04-08



PLATFORM FURNITURE



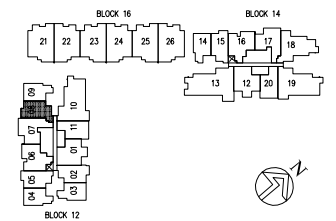
ISOMETRIC VIEW +



SECTION A-A

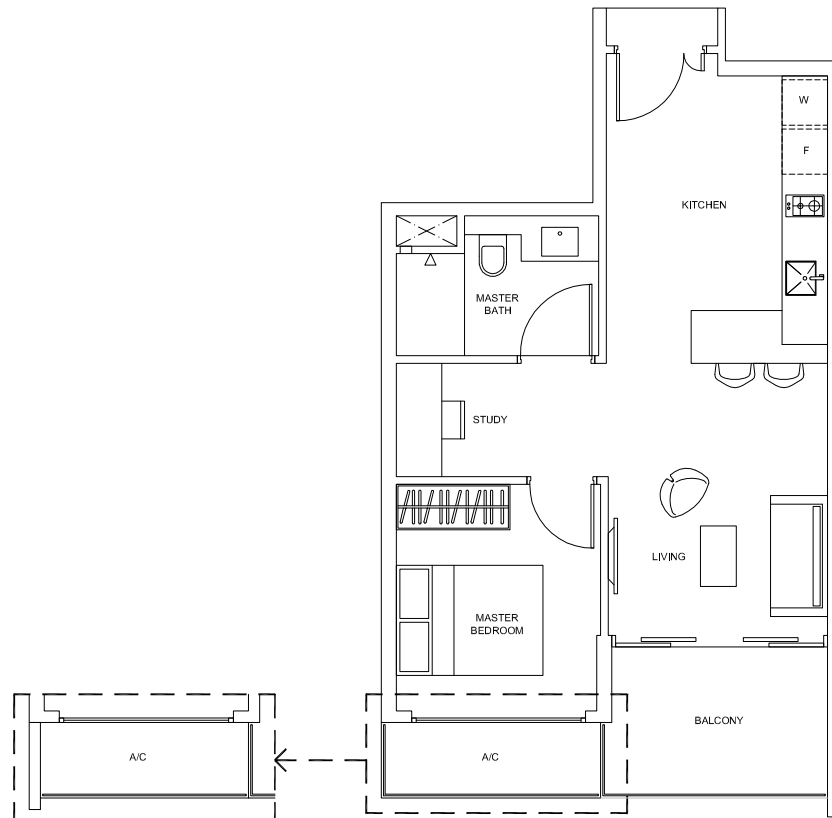
NOTE:  
+ isometric views have excluded railings drawings

*Plans are subject to change as may be required or approved by the relevant authorities. These are not drawn to scale and are for the purpose of visual presentation only. Indicated areas are estimates only and subject to final survey.*



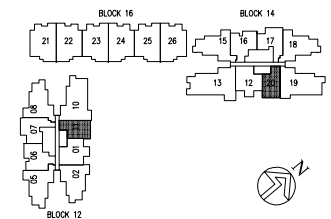
# 1-Bedroom + Study

TYPE AS-3  
Area: 53 sq m (include 3 sq m A/C LEDGE, 6 sq m BALCONY)  
Unit(s): #05-11 TO #13-11, #05-20 TO #13-20



applicable to #11-11 TO #13-11, #11-20 TO #13-20

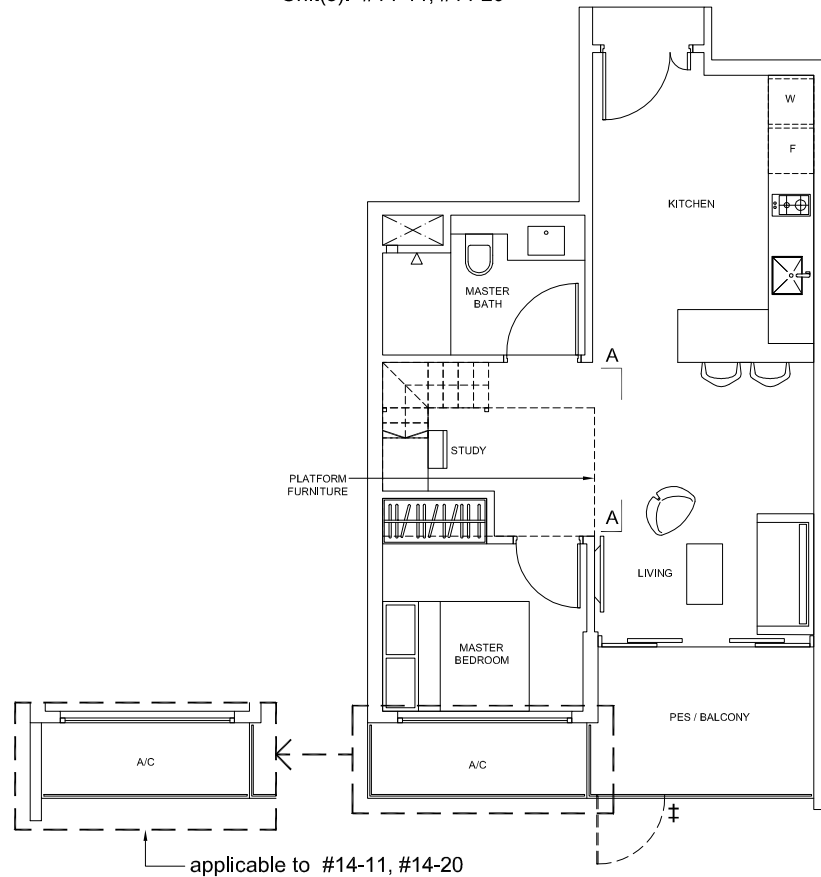
*Plans are subject to change as may be required or approved by the relevant authorities. These are not drawn to scale and are for the purpose of visual presentation only. Indicated areas are estimates only and subject to final survey.*



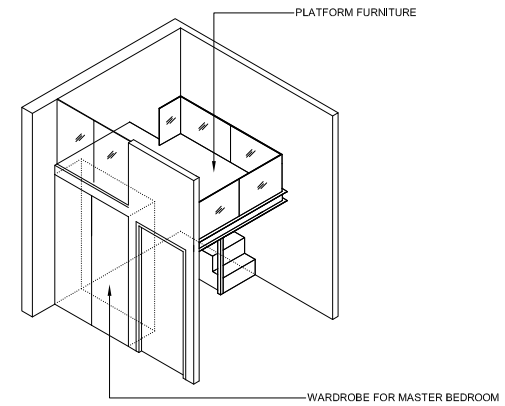
# 1-Bedroom + Study

TYPE AS-3G  
 Area: 53 sq m (include 3 sq m A/C LEDGE, 6 sq m PES)  
 Unit(s): #04-11, #04-20

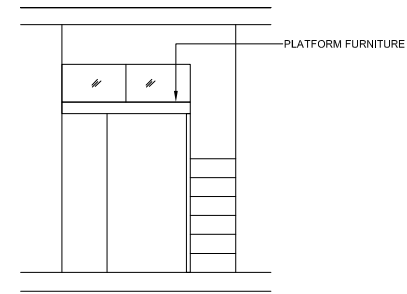
TYPE AS-3PH  
 Area: 53 sq m (include 3 sq m A/C LEDGE, 6 sq m BALCONY)  
 Unit(s): #14-11, #14-20



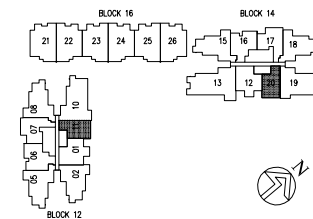
PLATFORM FURNITURE



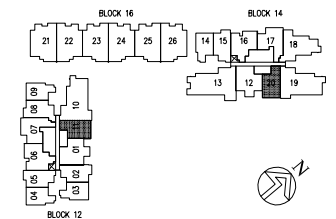
ISOMETRIC VIEW +



SECTION A-A



applicable to type AS-3PH



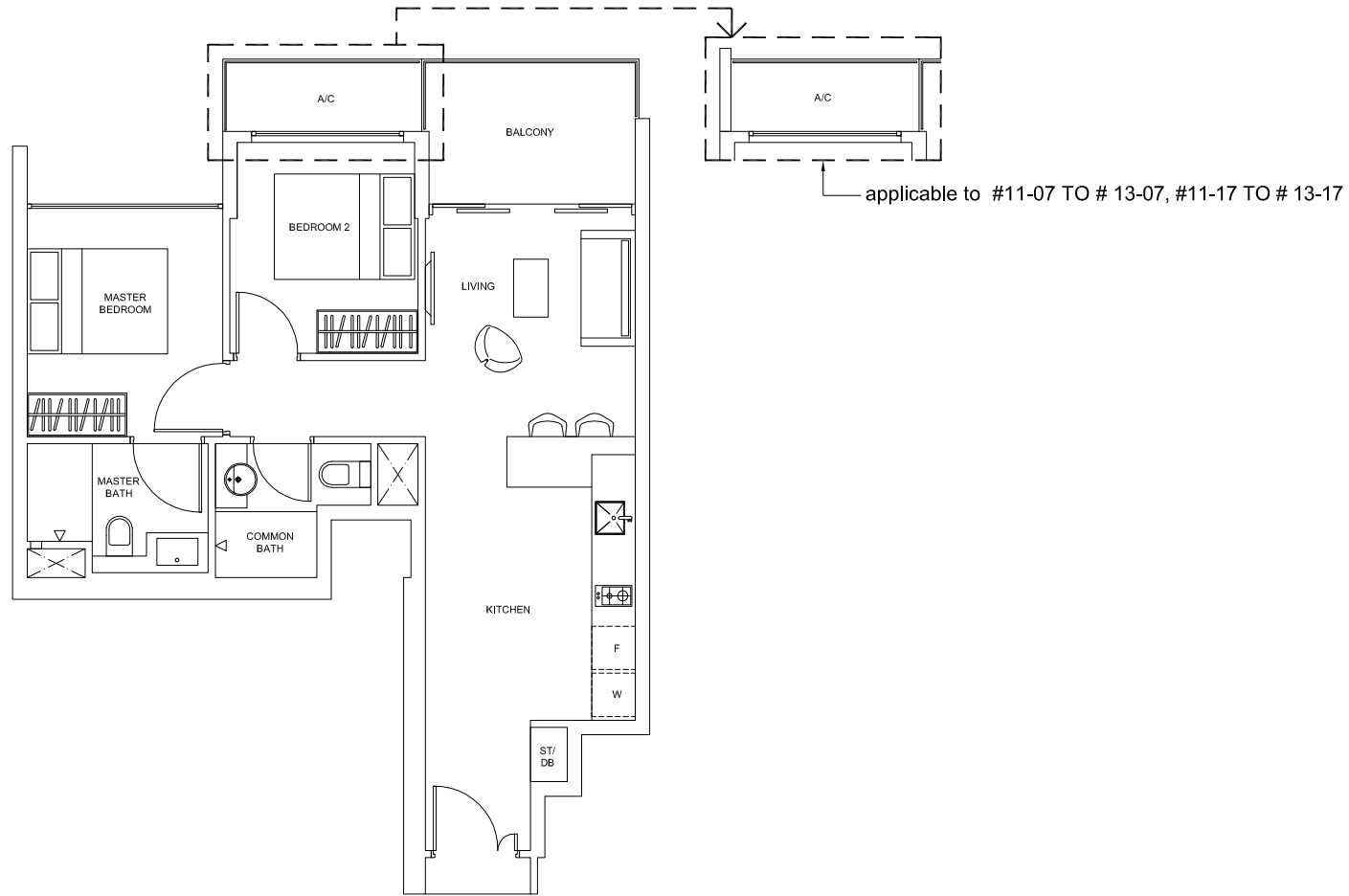
applicable to type AS-3G

NOTE:  
 + isometric views have excluded railings drawings  
 ‡ applicable to type AS-3G only

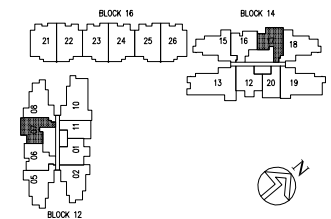
*Plans are subject to change as may be required or approved by the relevant authorities. These are not drawn to scale and are for the purpose of visual presentation only. Indicated areas are estimates only and subject to final survey.*

# 2-Bedroom

TYPE B-1  
Area: 65 sq m (include 3 sq m A/C LEDGE, 6 sq m BALCONY)  
Unit(s): #05-07 TO # 13-07, #05-17 TO # 13-17



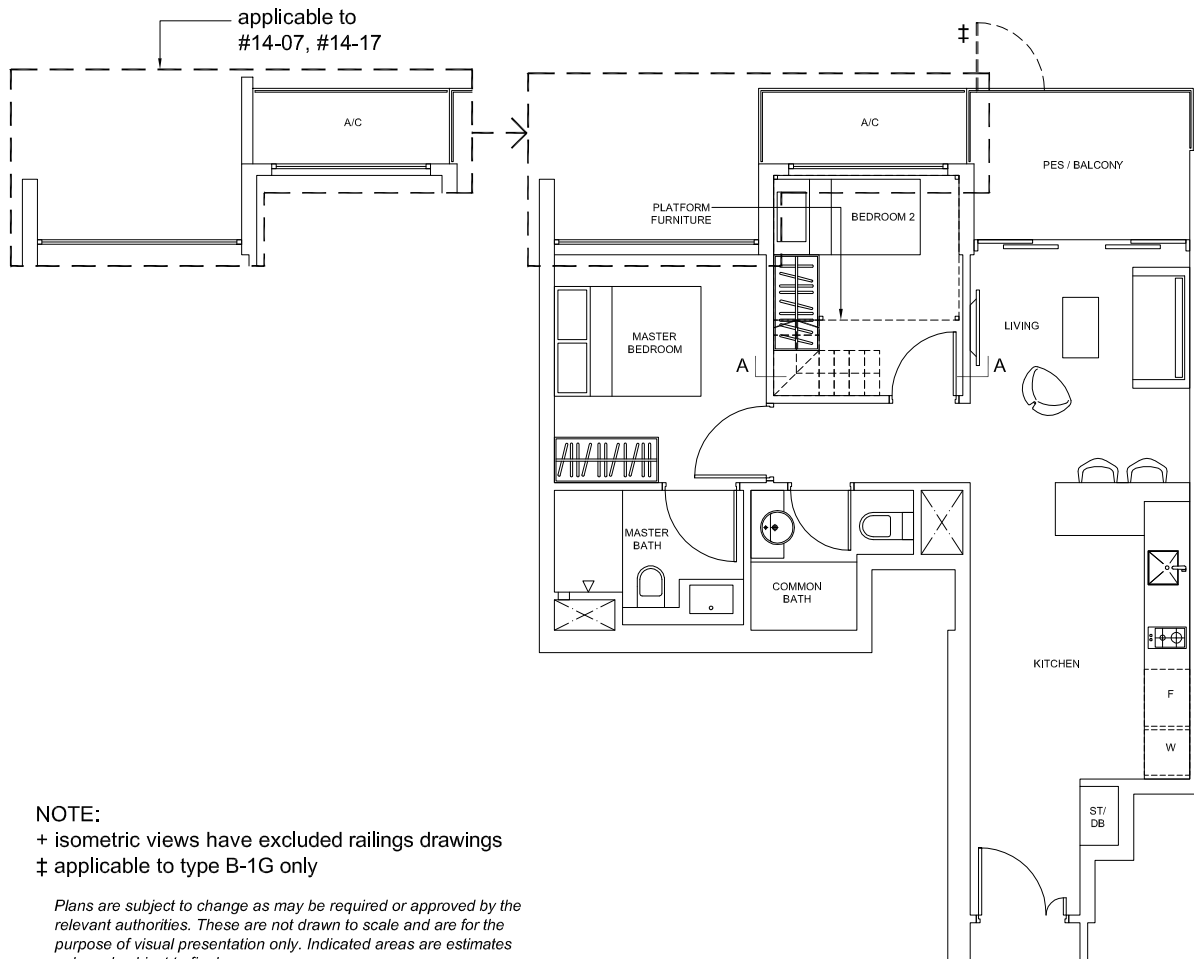
Plans are subject to change as may be required or approved by the relevant authorities. These are not drawn to scale and are for the purpose of visual presentation only. Indicated areas are estimates only and subject to final survey.



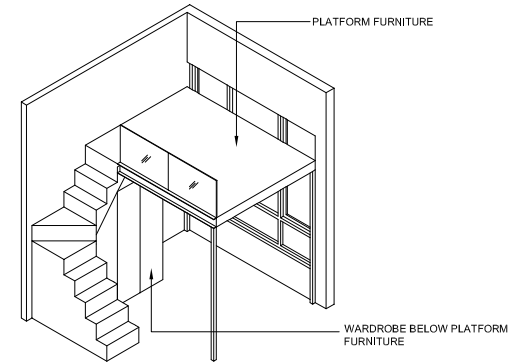
# 2-Bedroom

**TYPE B-1G**  
 Area: 65 sq m (include 3 sq m A/C LEDGE, 6 sq m PES)  
 Unit(s): #04-07, #04-17

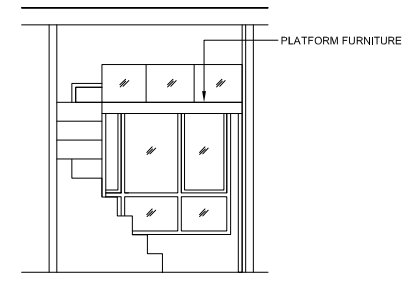
**TYPE B-1PH**  
 Area: 65 sq m (include 3 sq m A/C LEDGE, 6 sq m BALCONY)  
 Unit(s): #14-07, #14-17



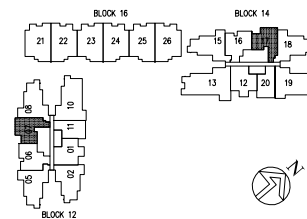
PLATFORM FURNITURE



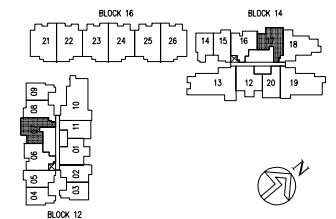
ISOMETRIC VIEW +



SECTION A-A



applicable to type B-1PH



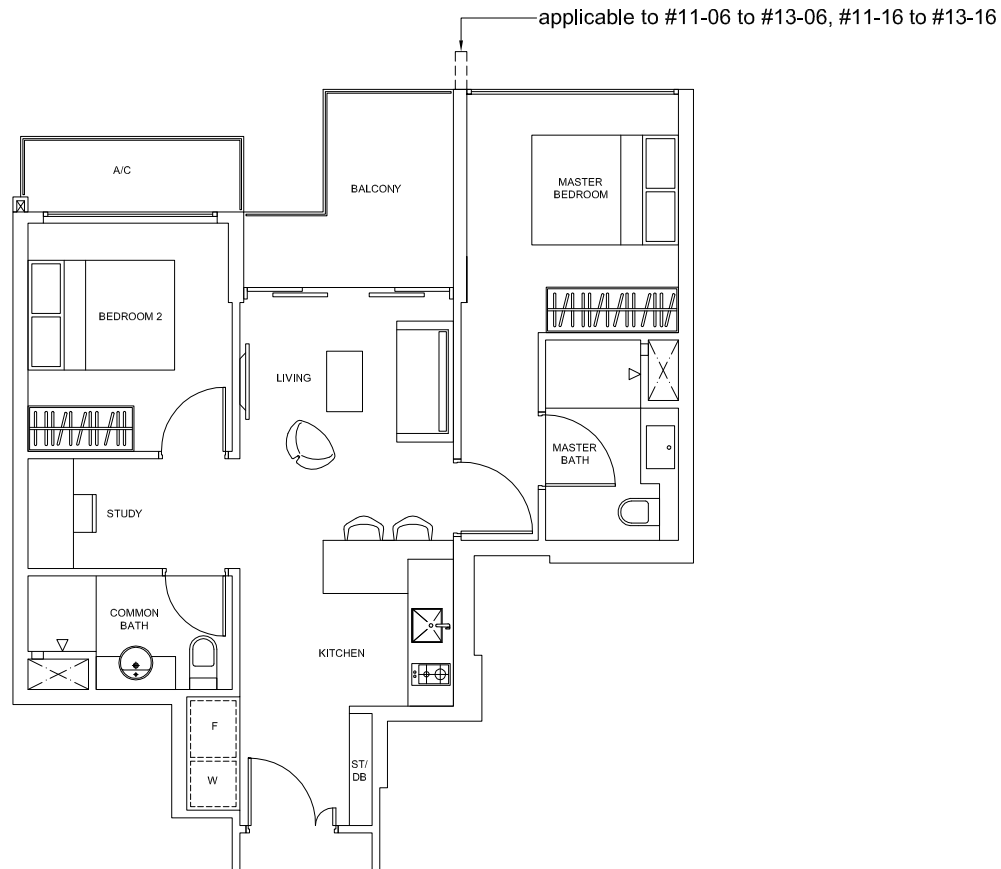
applicable to type B-1G

**NOTE:**  
 + isometric views have excluded railings drawings  
 ‡ applicable to type B-1G only

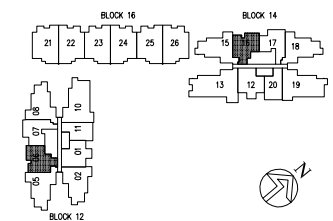
*Plans are subject to change as may be required or approved by the relevant authorities. These are not drawn to scale and are for the purpose of visual presentation only. Indicated areas are estimates only and subject to final survey.*

## 2-Bedroom + Study

TYPE BS-1  
Area: 66 sq m (include 3 sq m A/C LEDGE, 6 sq m BALCONY)  
Unit(s): #05-06 TO #13-06, #05-16 TO #13-16



*Plans are subject to change as may be required or approved by the relevant authorities. These are not drawn to scale and are for the purpose of visual presentation only. Indicated areas are estimates only and subject to final survey.*





## 2-Bedroom + Study

### TYPE BS-1G

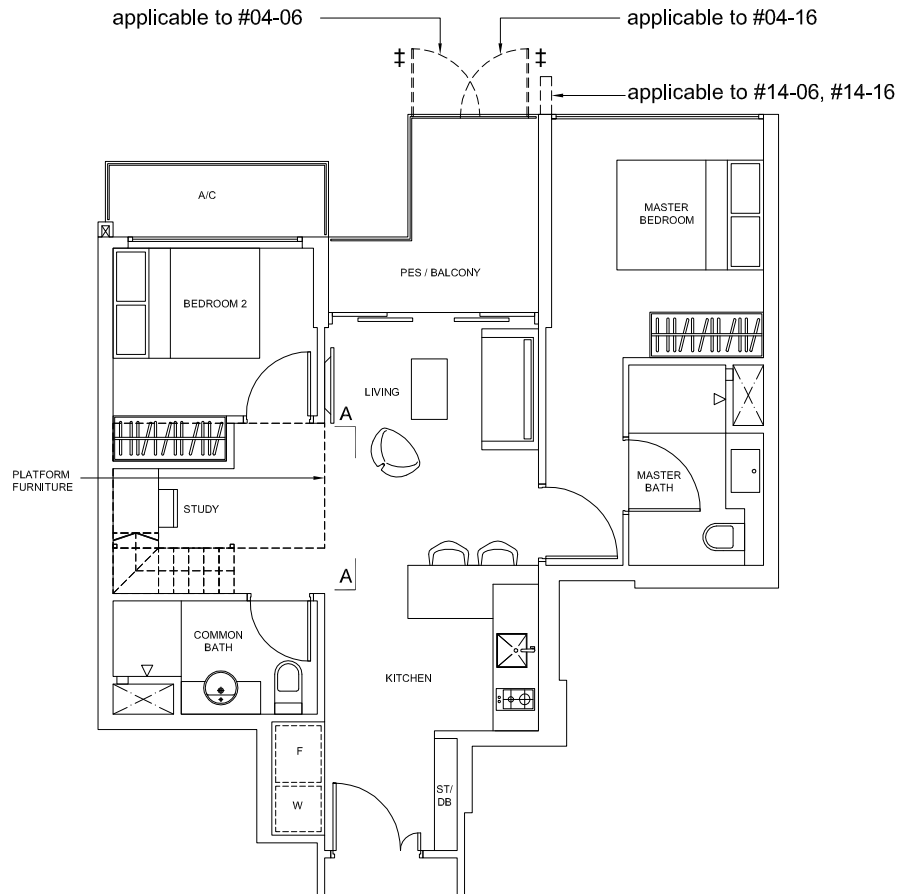
Area: 66 sq m (include 3 sq m A/C LEDGE, 6 sq m PES)

Unit(s): #04-06, #04-16

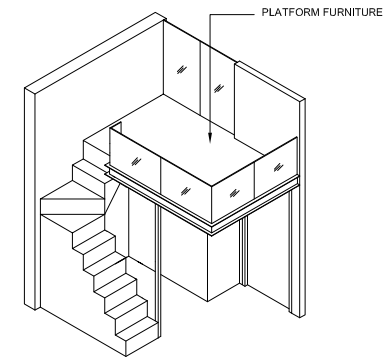
### TYPE BS-1PH

Area: 66 sq m (include 3 sq m A/C LEDGE, 6 sq m BALCONY)

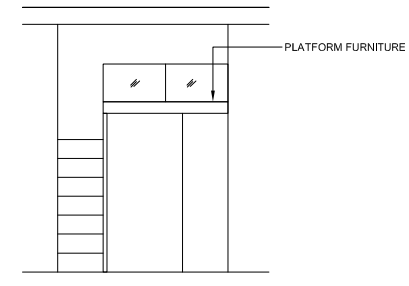
Unit(s): #14-06, #14-16



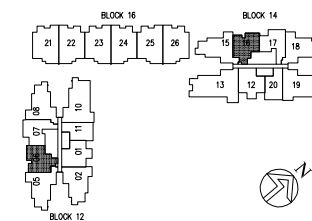
PLATFORM FURNITURE



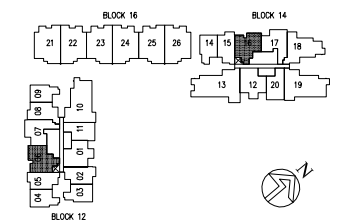
ISOMETRIC VIEW +



SECTION A-A



applicable to type BS-1PH



applicable to type BS-1G

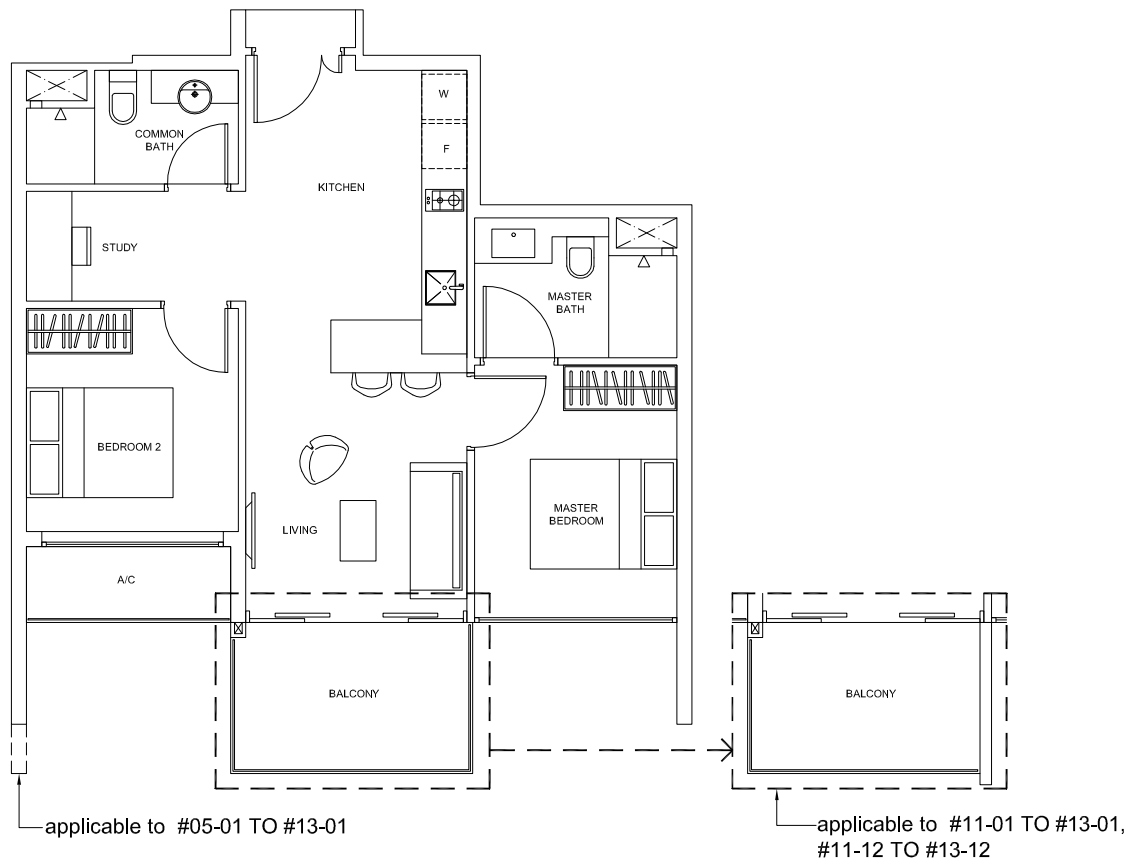
### NOTE:

+ isometric views have excluded railings drawings  
 ‡ applicable to type BS-1G only

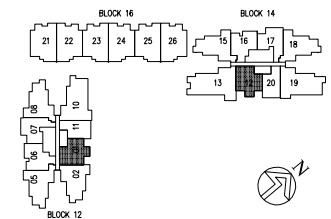
*Plans are subject to change as may be required or approved by the relevant authorities. These are not drawn to scale and are for the purpose of visual presentation only. Indicated areas are estimates only and subject to final survey.*

## 2-Bedroom + Study

TYPE BS-2  
Area: 66 sq m (include 3 sq m A/C LEDGE, 6 sq m BALCONY)  
Unit(s): #05-01 TO #13-01, #05-12 TO #13-12



Plans are subject to change as may be required or approved by the relevant authorities. These are not drawn to scale and are for the purpose of visual presentation only. Indicated areas are estimates only and subject to final survey.



## 2-Bedroom + Study

### TYPE BS-2G

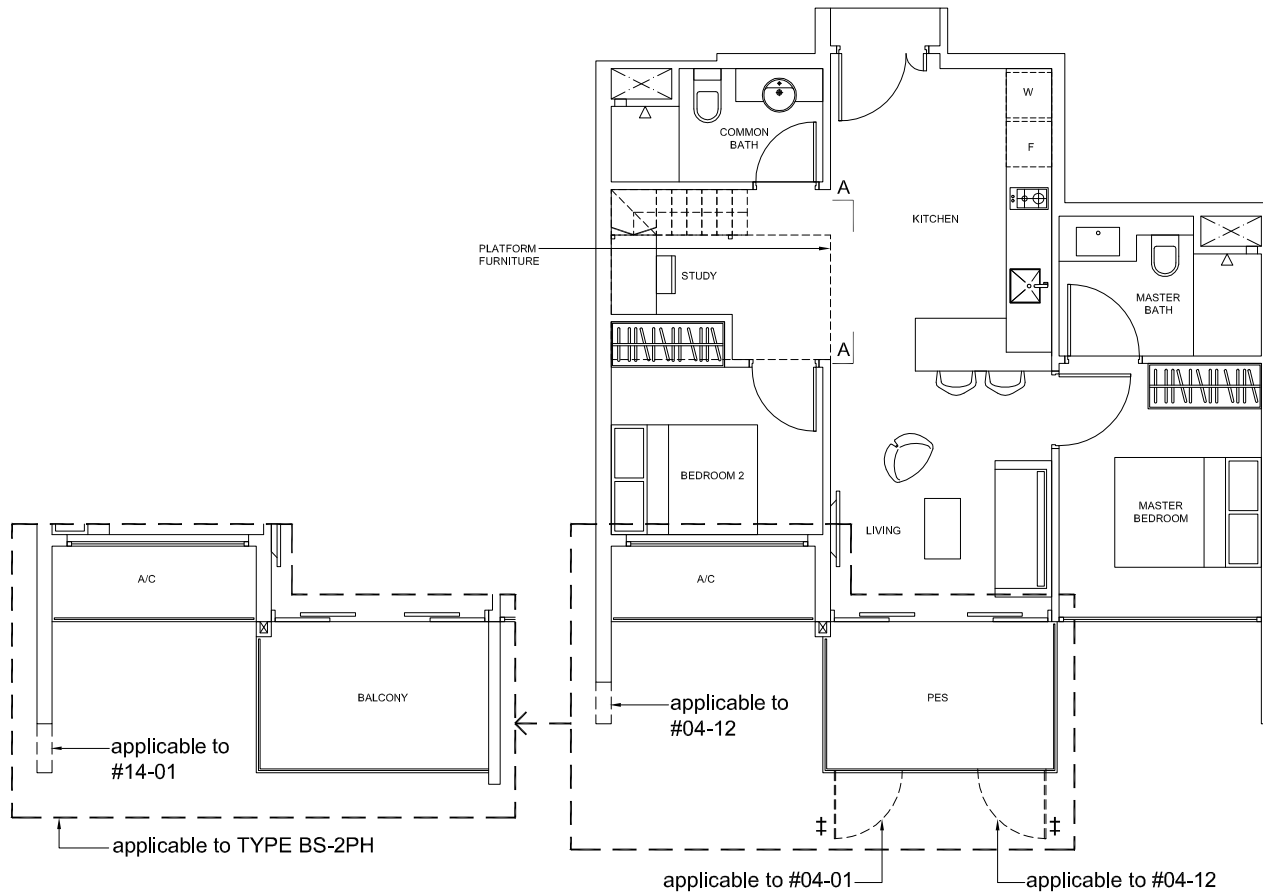
Area: 66 sq m (include 3 sq m A/C LEDGE, 6 sq m PES)

Unit(s): #04-01, #04-12

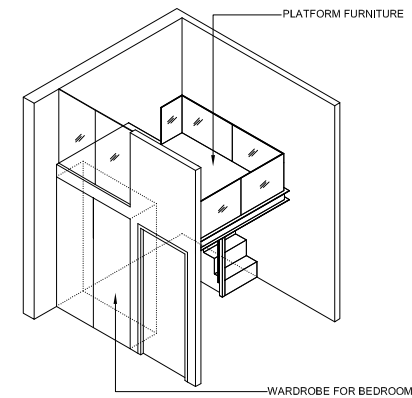
### TYPE BS-2PH

Area: 66 sq m (include 3 sq m A/C LEDGE, 6 sq m BALCONY)

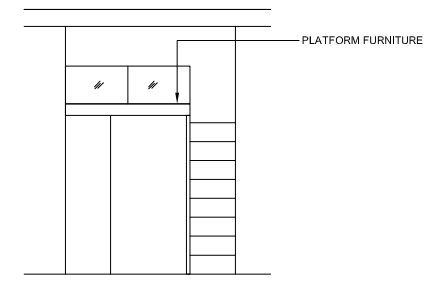
Unit(s): #14-01, #14-12



PLATFORM FURNITURE



ISOMETRIC VIEW +



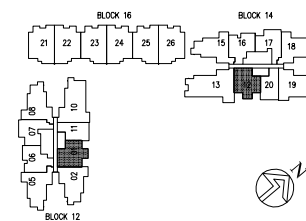
SECTION A-A

### NOTE:

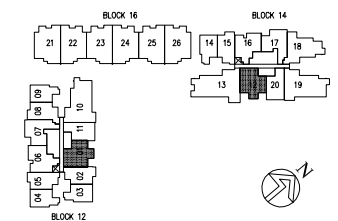
+ isometric views have excluded railings drawings

‡ applicable to type BS-2G only

Plans are subject to change as may be required or approved by the relevant authorities. These are not drawn to scale and are for the purpose of visual presentation only. Indicated areas are estimates only and subject to final survey.



applicable to type BS-2PH



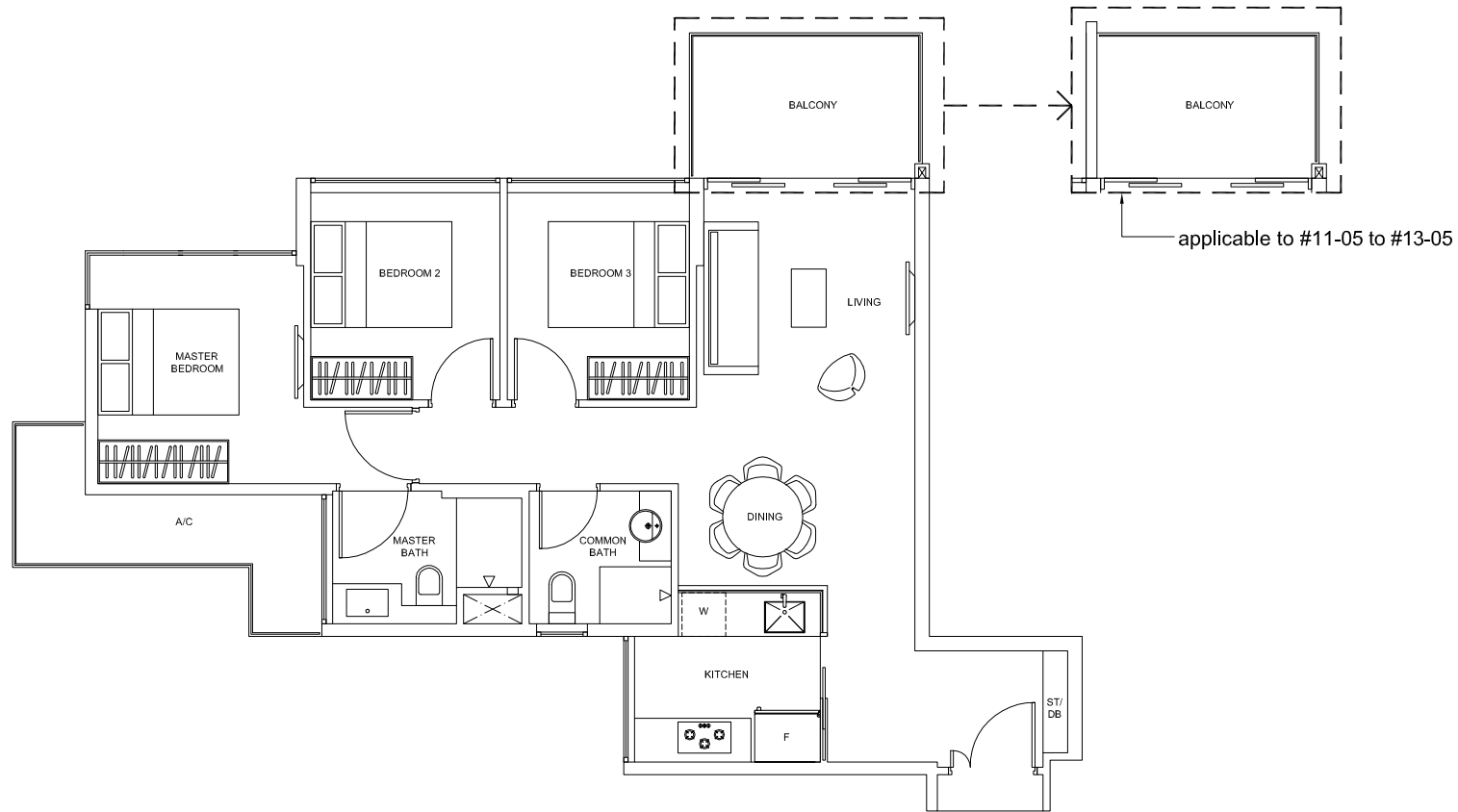
applicable to type BS-2G

# 3-Bedroom

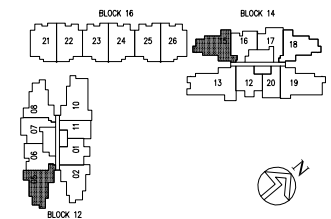
TYPE C-1

Area: 86 sq m (include 7 sq m A/C LEDGE, 7 sq m BALCONY)

Unit(s): #05-05 TO #13-05, #05-15 TO #10-15

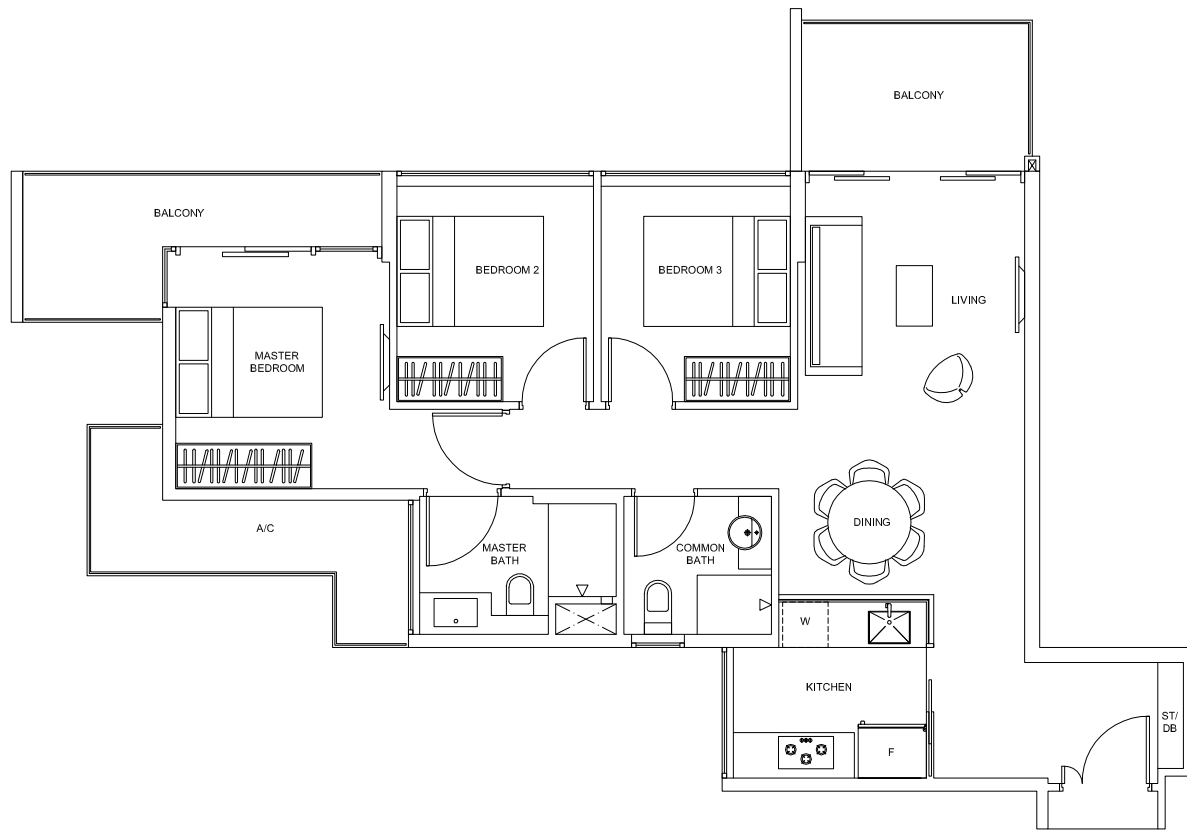


Plans are subject to change as may be required or approved by the relevant authorities. These are not drawn to scale and are for the purpose of visual presentation only. Indicated areas are estimates only and subject to final survey.

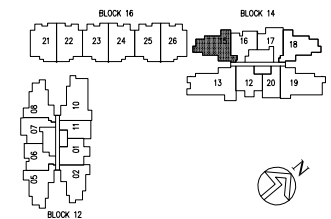


# 3-Bedroom

TYPE C-1a  
Area: 93 sq m (include 7 sq m A/C LEDGE, 13 sq m BALCONY)  
Unit(s): #11-15 TO #13-15

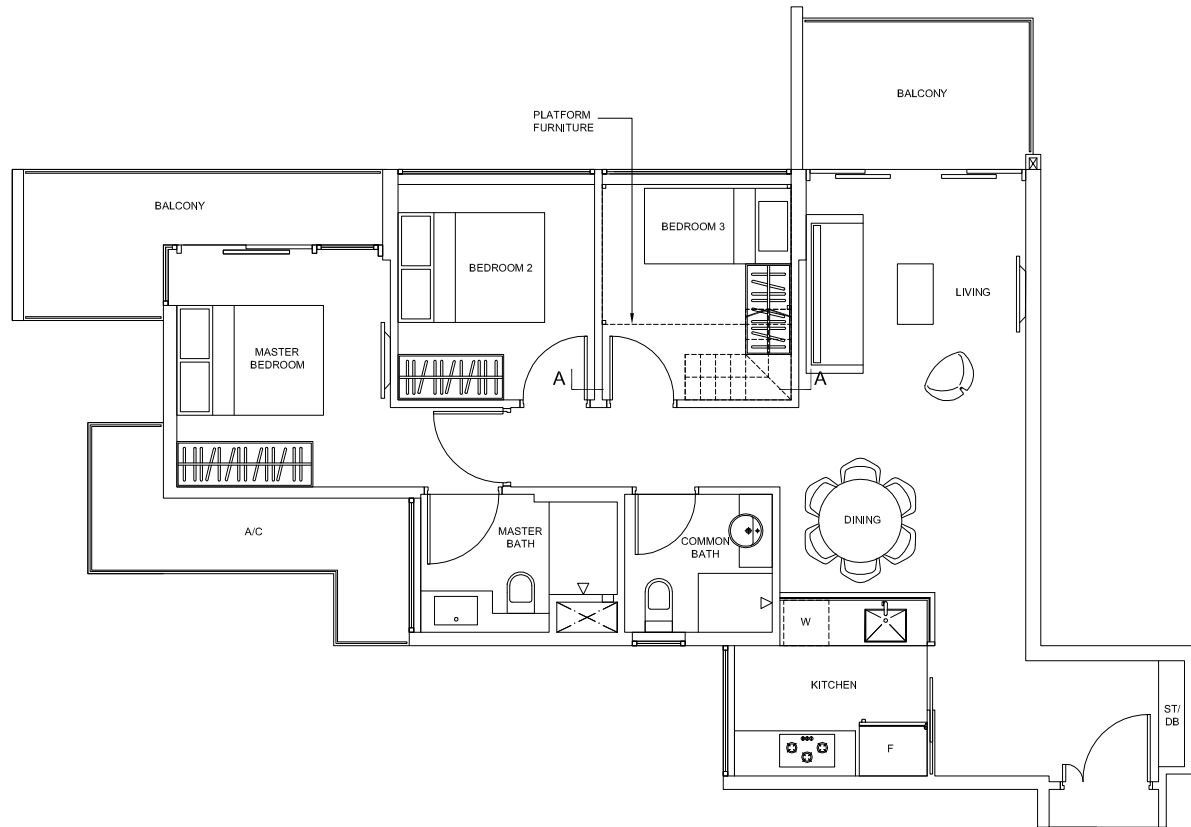


*Plans are subject to change as may be required or approved by the relevant authorities. These are not drawn to scale and are for the purpose of visual presentation only. Indicated areas are estimates only and subject to final survey.*

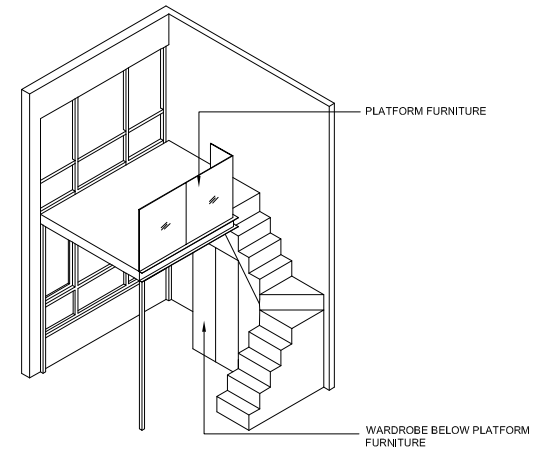


# 3-Bedroom

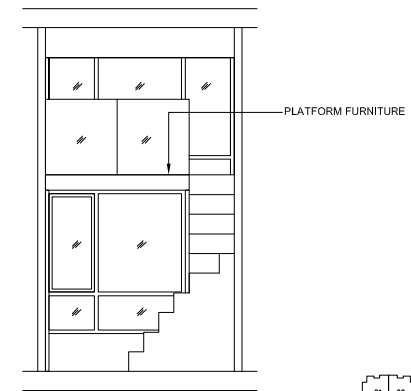
TYPE C-1aPH  
 Area: 93 sq m (include 7 sq m A/C LEDGE, 13 sq m BALCONY)  
 Unit(s): #14-15



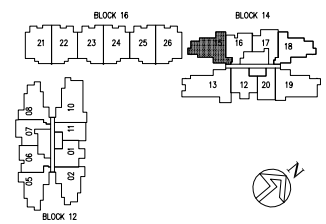
PLATFORM FURNITURE



ISOMETRIC VIEW +



SECTION A-A

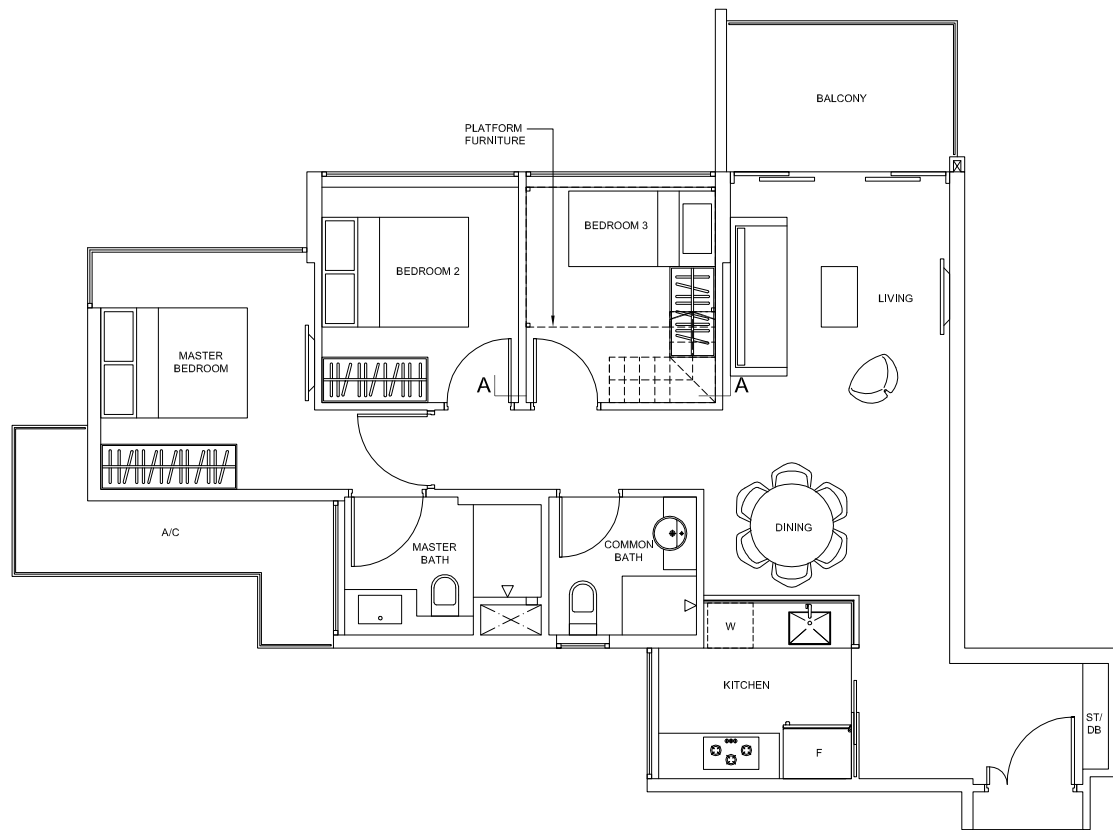


**NOTE:**  
 + isometric views have excluded railings drawings

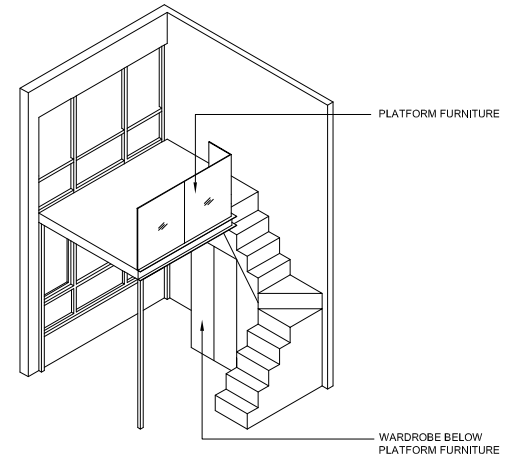
*Plans are subject to change as may be required or approved by the relevant authorities. These are not drawn to scale and are for the purpose of visual presentation only. Indicated areas are estimates only and subject to final survey.*

# 3-Bedroom

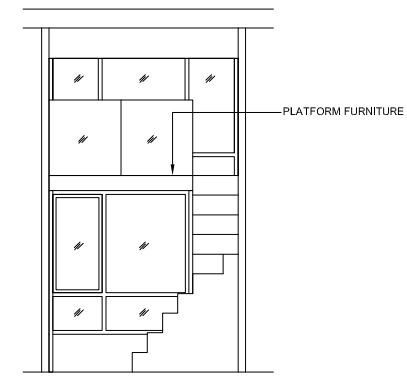
TYPE C-1PH  
 Area: 86 sq m (include 7 sq m A/C LEDGE, 7 sq m BALCONY)  
 Unit(s): #14-05



PLATFORM FURNITURE



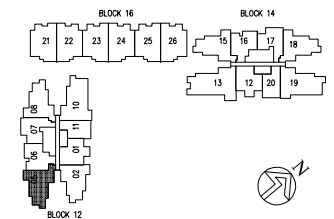
ISOMETRIC VIEW +



SECTION A-A

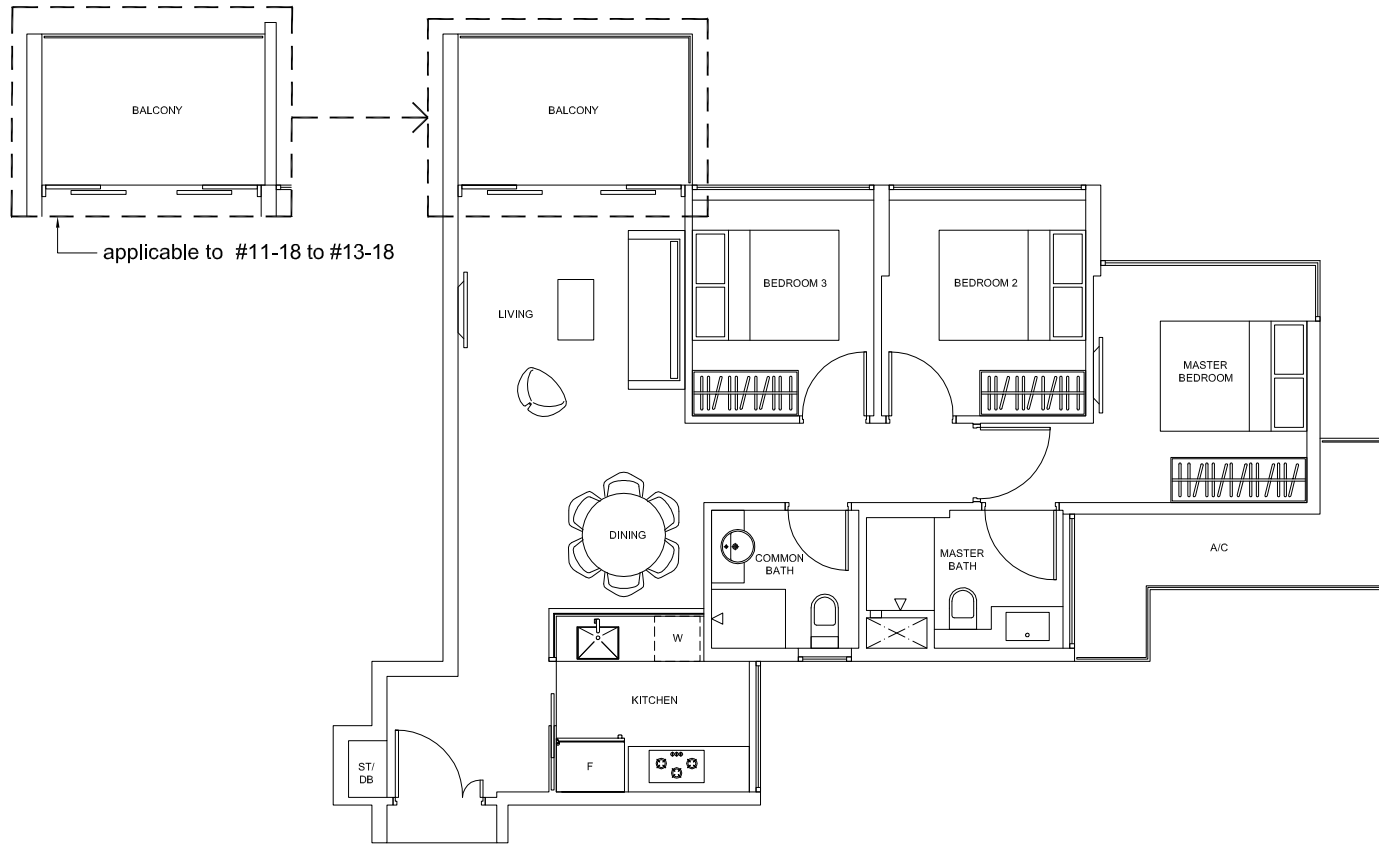
**NOTE:**  
 + isometric views have excluded railings drawings

*Plans are subject to change as may be required or approved by the relevant authorities. These are not drawn to scale and are for the purpose of visual presentation only. Indicated areas are estimates only and subject to final survey.*

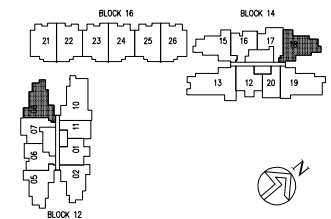


# 3-Bedroom

TYPE C-2  
Area: 85 sq m (include 7 sq m A/C LEDGE, 7 sq m BALCONY)  
Unit(s): #05-08 TO #10-08, #05-18 TO #13-18



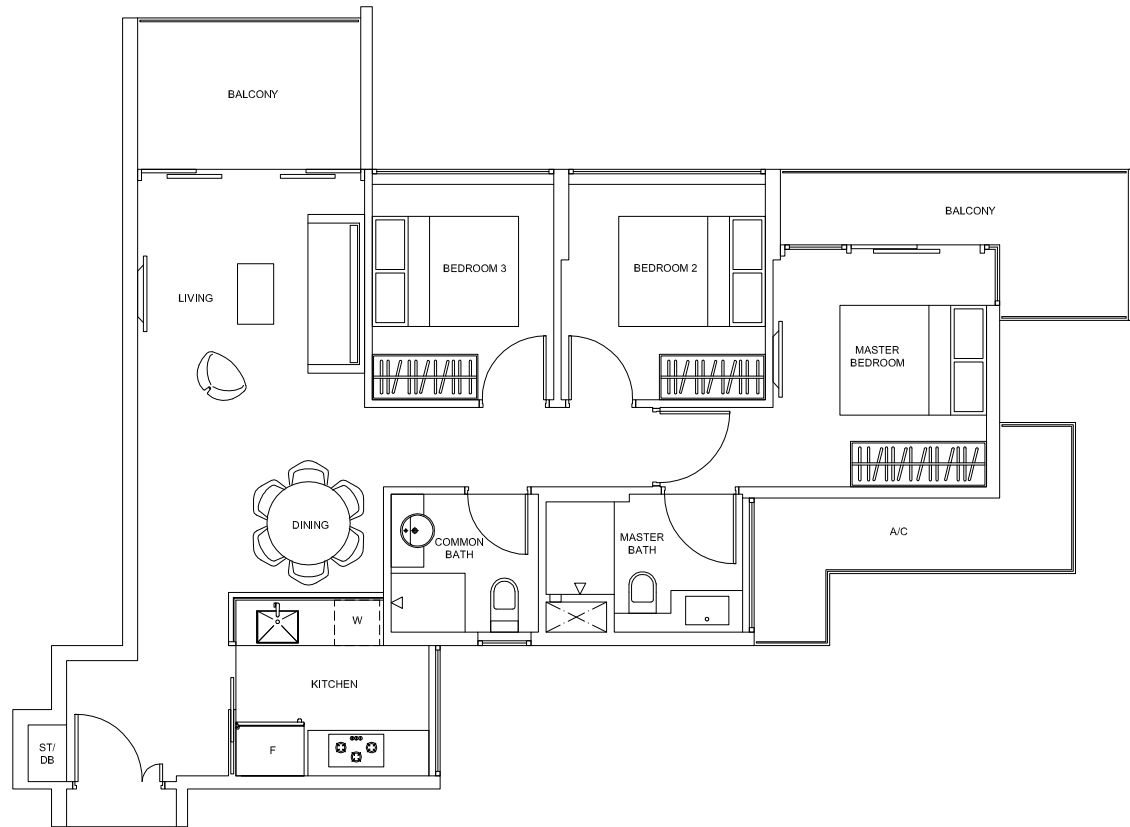
Plans are subject to change as may be required or approved by the relevant authorities. These are not drawn to scale and are for the purpose of visual presentation only. Indicated areas are estimates only and subject to final survey.



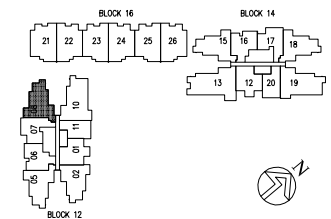


# 3-Bedroom

TYPE C-2a  
Area: 92 sq m (include 7 sq m A/C LEDGE, 13 sq m BALCONY)  
Unit(s): #11-08 TO #13-08



Plans are subject to change as may be required or approved by the relevant authorities. These are not drawn to scale and are for the purpose of visual presentation only. Indicated areas are estimates only and subject to final survey.

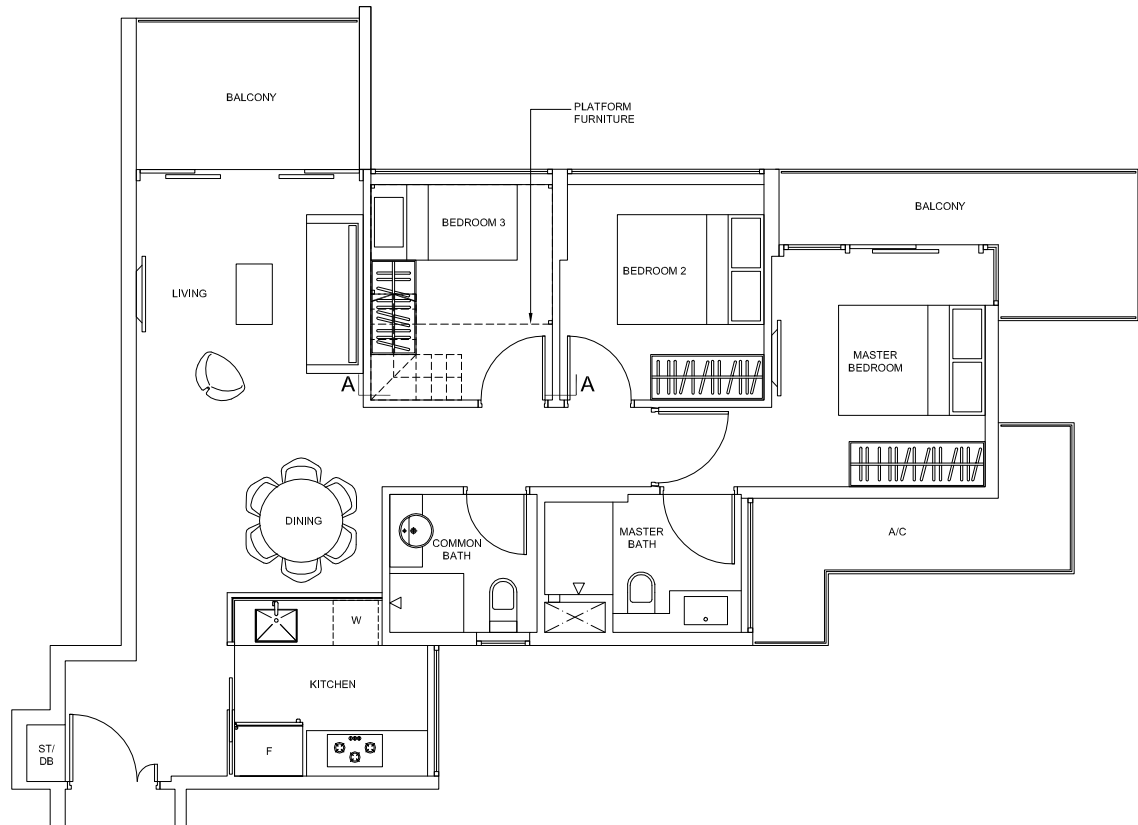


# 3-Bedroom

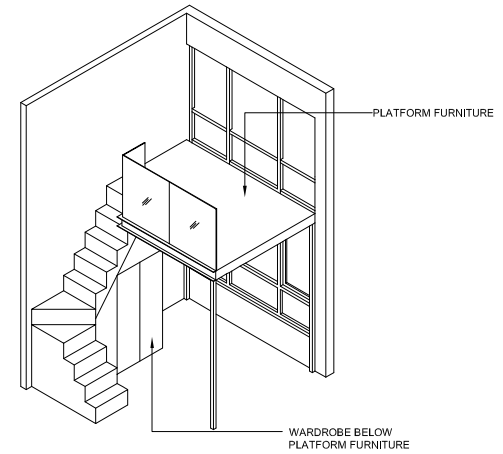
TYPE C-2aPH

Area: 92 sq m (include 7 sq m A/C LEDGE, 13 sq m BALCONY)

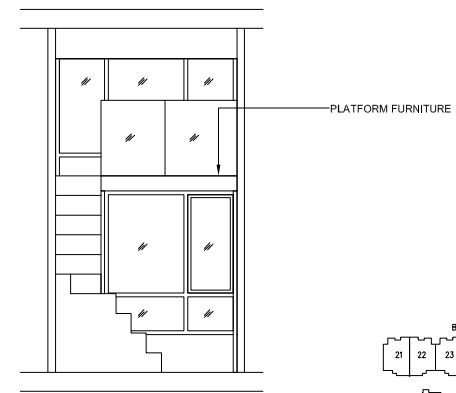
Unit(s): #14-08



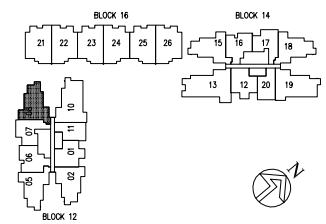
PLATFORM FURNITURE



ISOMETRIC VIEW +



SECTION A-A



**NOTE:**

+ isometric views have excluded railings drawings

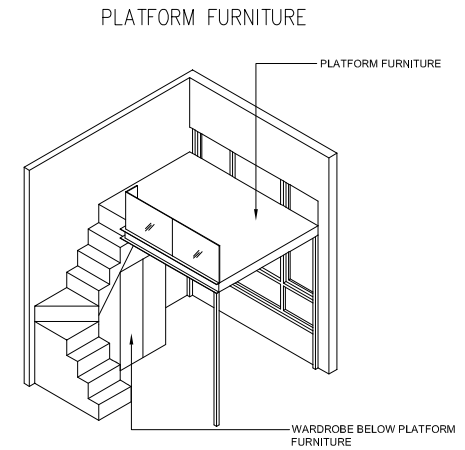
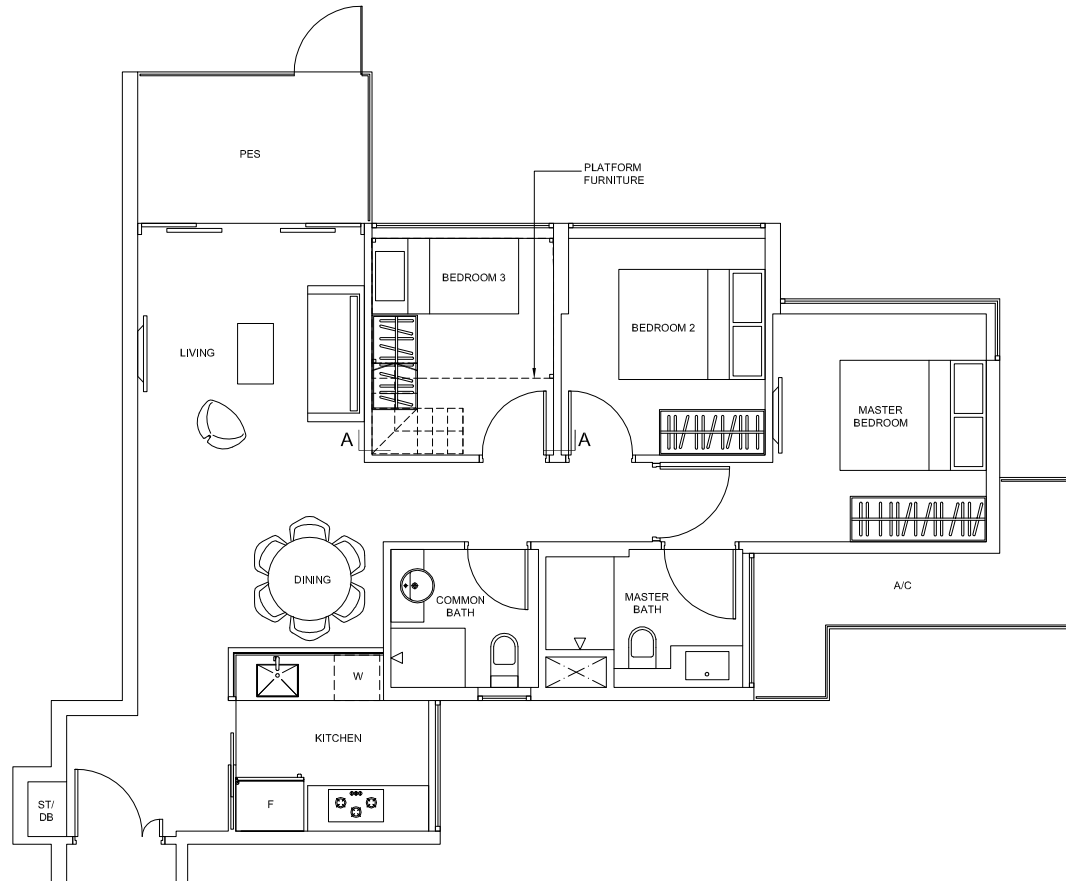
*Plans are subject to change as may be required or approved by the relevant authorities. These are not drawn to scale and are for the purpose of visual presentation only. Indicated areas are estimates only and subject to final survey.*

# 3-Bedroom

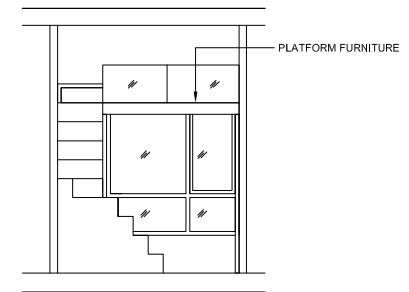
TYPE C-2G

Area: 85 sq m (include 7 sq m A/C LEDGE, 7 sq m PES)

Unit(s): #04-18



ISOMETRIC VIEW +

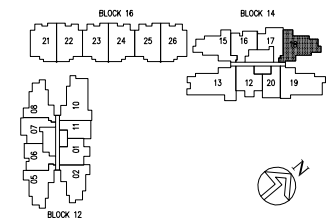


SECTION A-A

**NOTE:**

+ isometric views have excluded railings drawings

*Plans are subject to change as may be required or approved by the relevant authorities. These are not drawn to scale and are for the purpose of visual presentation only. Indicated areas are estimates only and subject to final survey.*

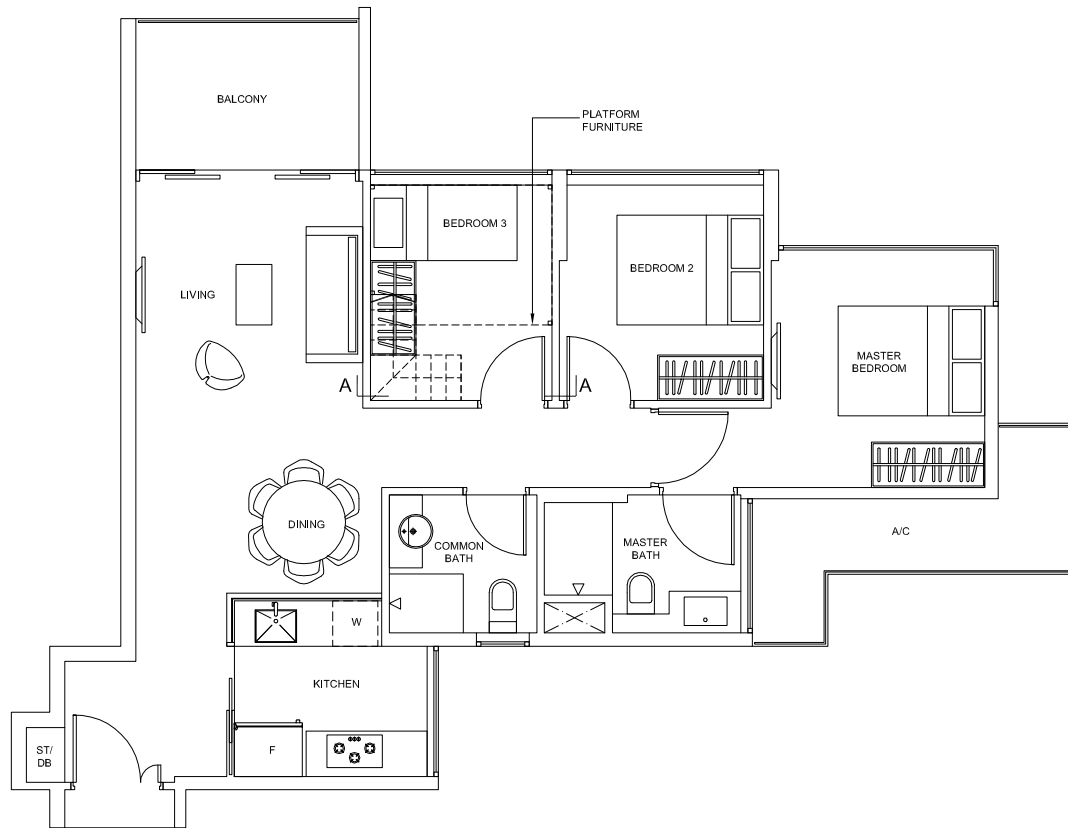


# 3-Bedroom

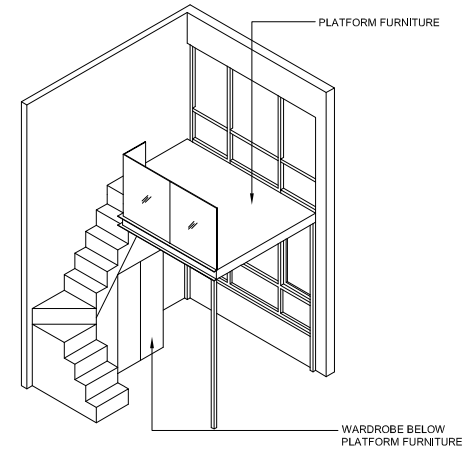
## TYPE C-2PH

Area: 85 sq m (include 7 sq m A/C LEDGE, 6 sq m BALCONY)

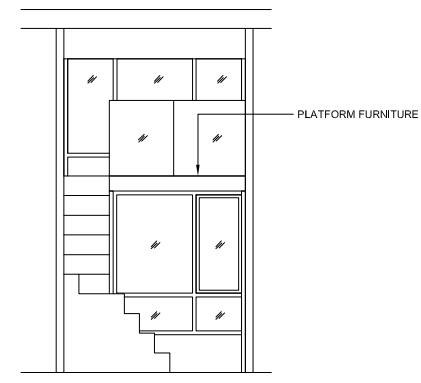
Unit(s): #14-18



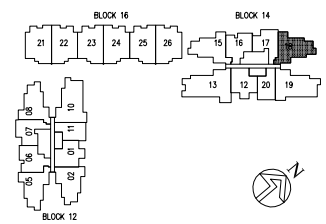
PLATFORM FURNITURE



ISOMETRIC VIEW +



SECTION A-A



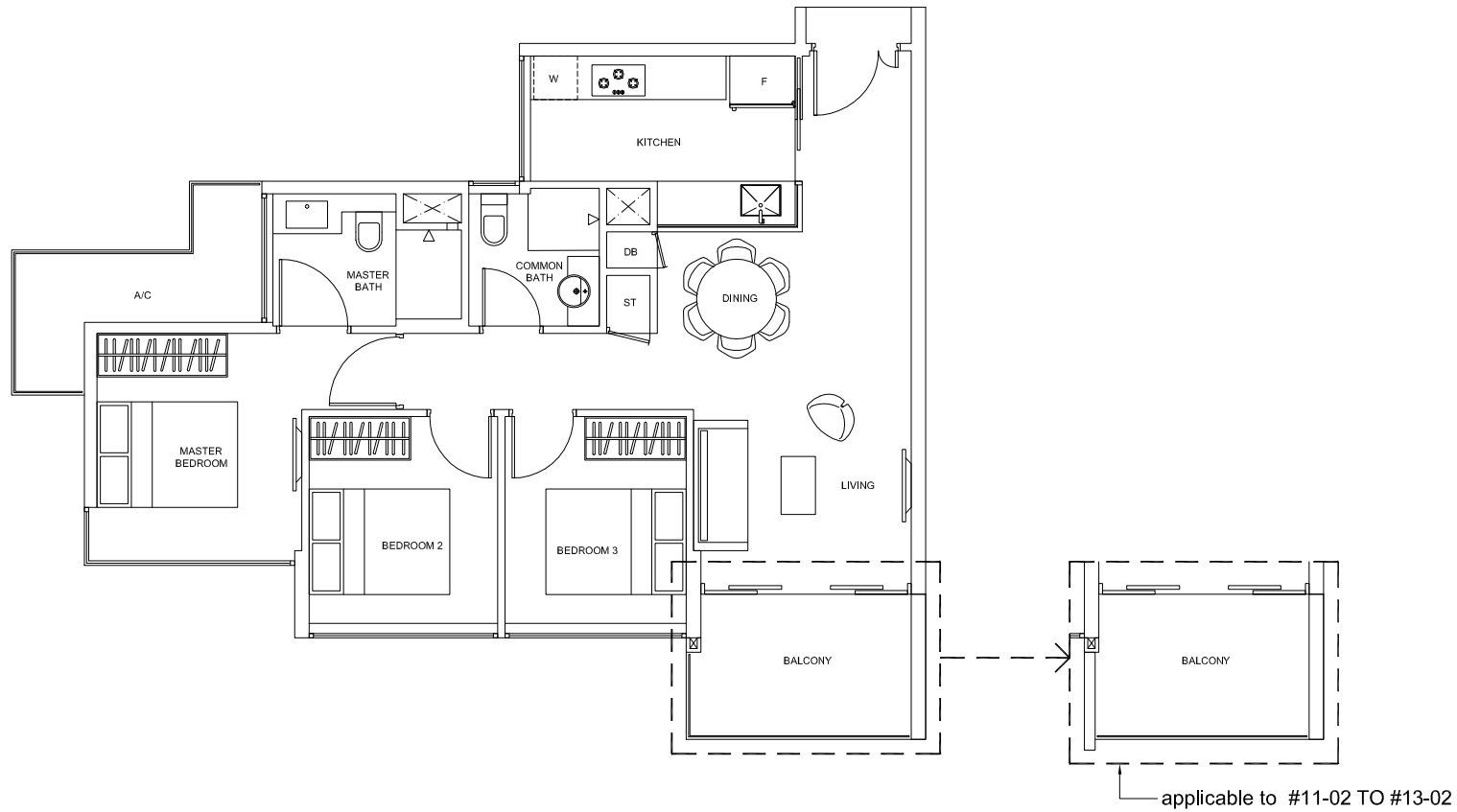
**NOTE:**

+ isometric views have excluded railings drawings

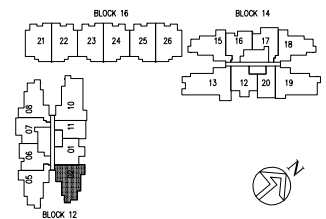
*Plans are subject to change as may be required or approved by the relevant authorities. These are not drawn to scale and are for the purpose of visual presentation only. Indicated areas are estimates only and subject to final survey.*

# 3-Bedroom

TYPE C-3  
Area: 84 sq m (include 6 sq m A/C LEDGE, 7 sq m BALCONY)  
Unit(s): #05-02 TO #13-02

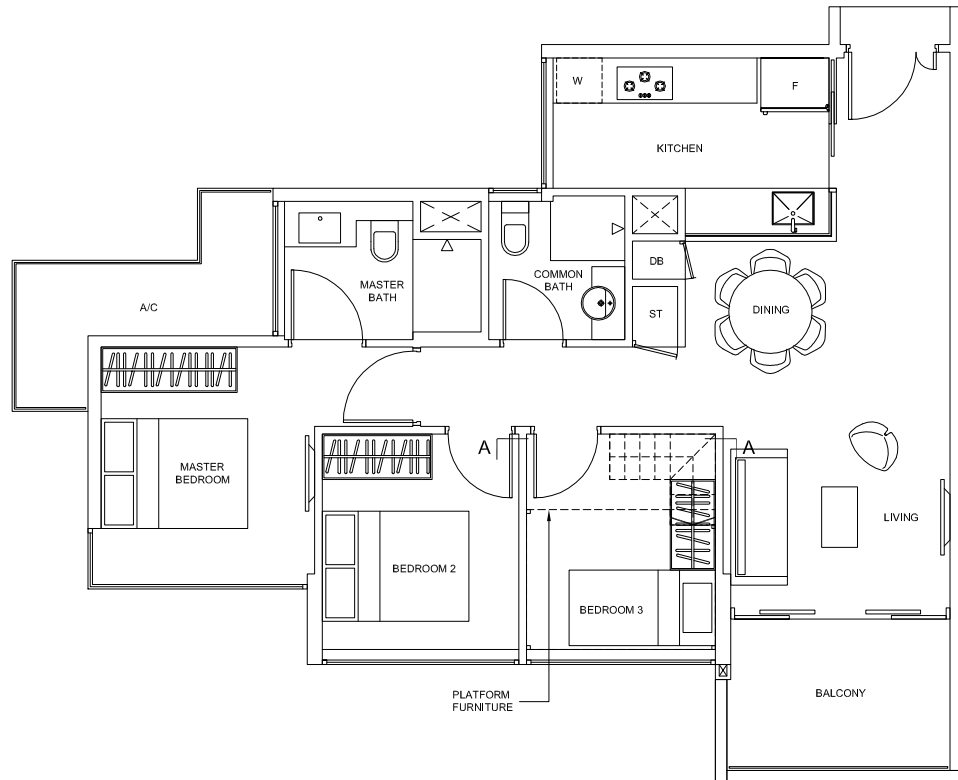


*Plans are subject to change as may be required or approved by the relevant authorities. These are not drawn to scale and are for the purpose of visual presentation only. Indicated areas are estimates only and subject to final survey.*

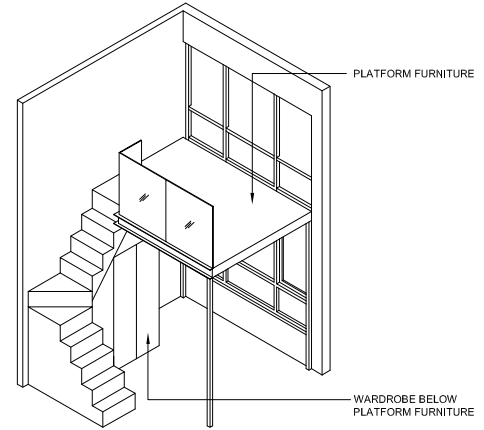


# 3-Bedroom

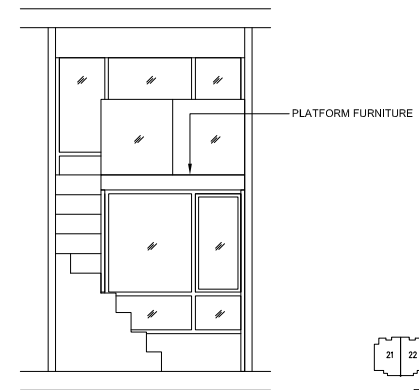
TYPE C-3PH  
 Area: 84 sq m (include 6 sq m A/C LEDGE, 7 sq m BALCONY)  
 Unit(s): #14-02



PLATFORM FURNITURE



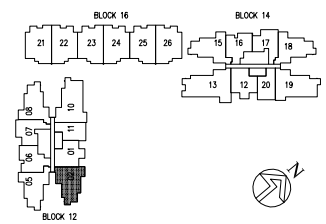
ISOMETRIC VIEW +



SECTION A-A

**NOTE:**  
 + isometric views have excluded railings drawings

*Plans are subject to change as may be required or approved by the relevant authorities. These are not drawn to scale and are for the purpose of visual presentation only. Indicated areas are estimates only and subject to final survey.*

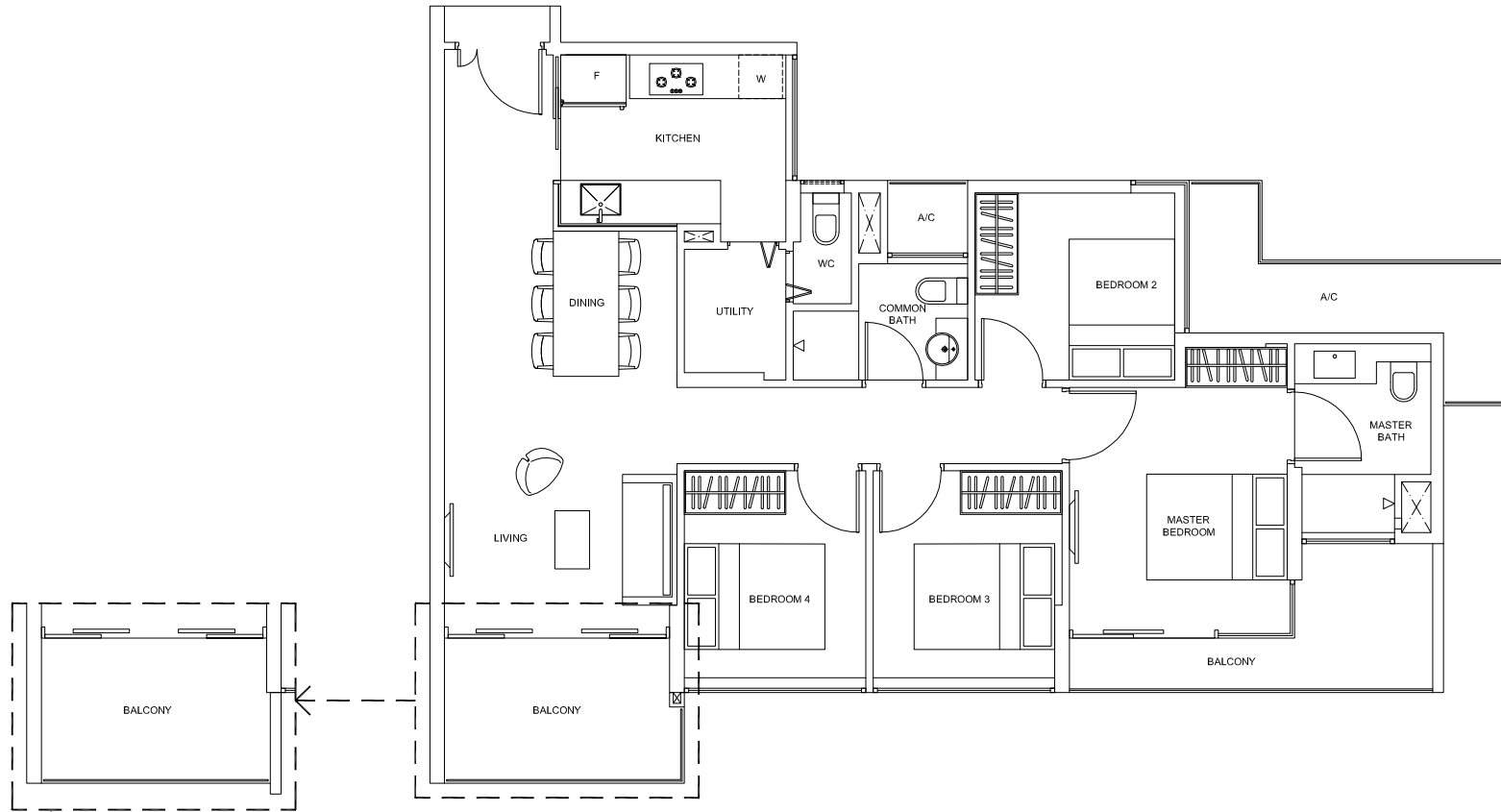


# 4-Bedroom

## TYPE D

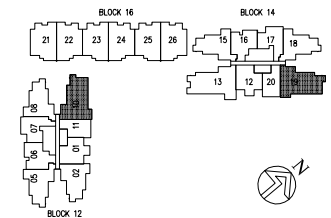
Area: 109 sq m (include 8 sq m A/C LEDGE, 13 sq m BALCONY)

Unit(s): #05-10 TO #13-10, #05-19 TO #13-19



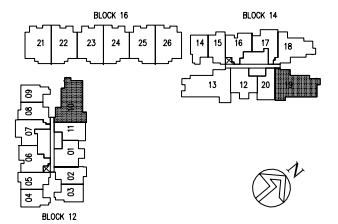
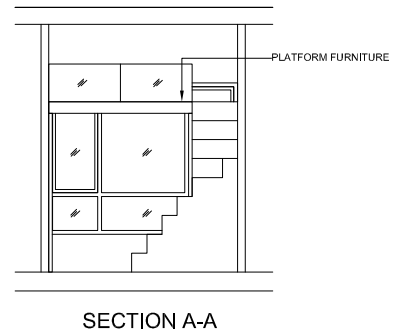
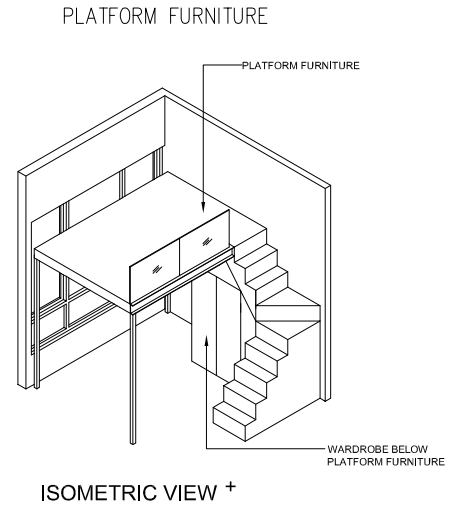
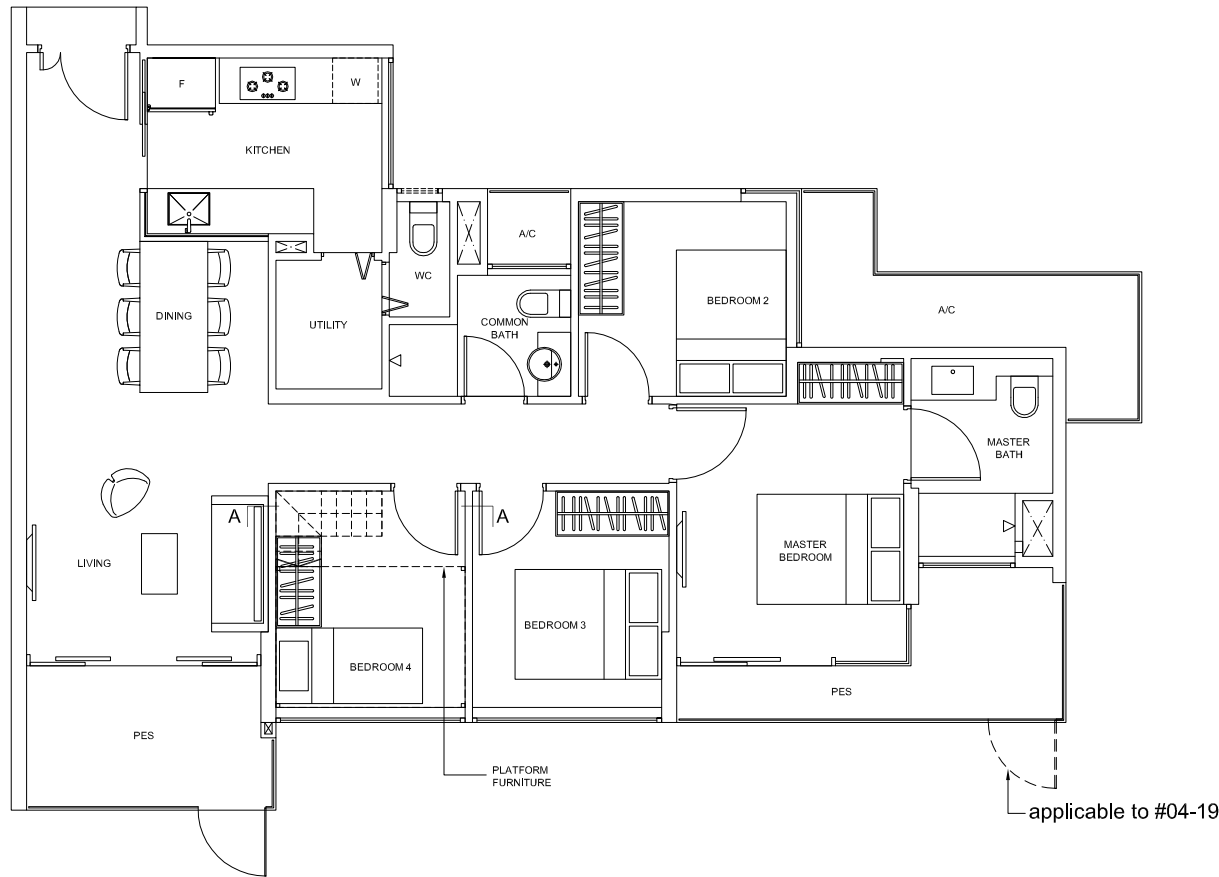
applicable to #11-10 TO #13-10,  
#11-19 TO #13-19

*Plans are subject to change as may be required or approved by the relevant authorities. These are not drawn to scale and are for the purpose of visual presentation only. Indicated areas are estimates only and subject to final survey.*



# 4-Bedroom

TYPE D-G  
 Area: 109 sq m (include 8 sq m A/C LEDGE, 13 sq m PES)  
 Unit(s): #04-10, #04-19

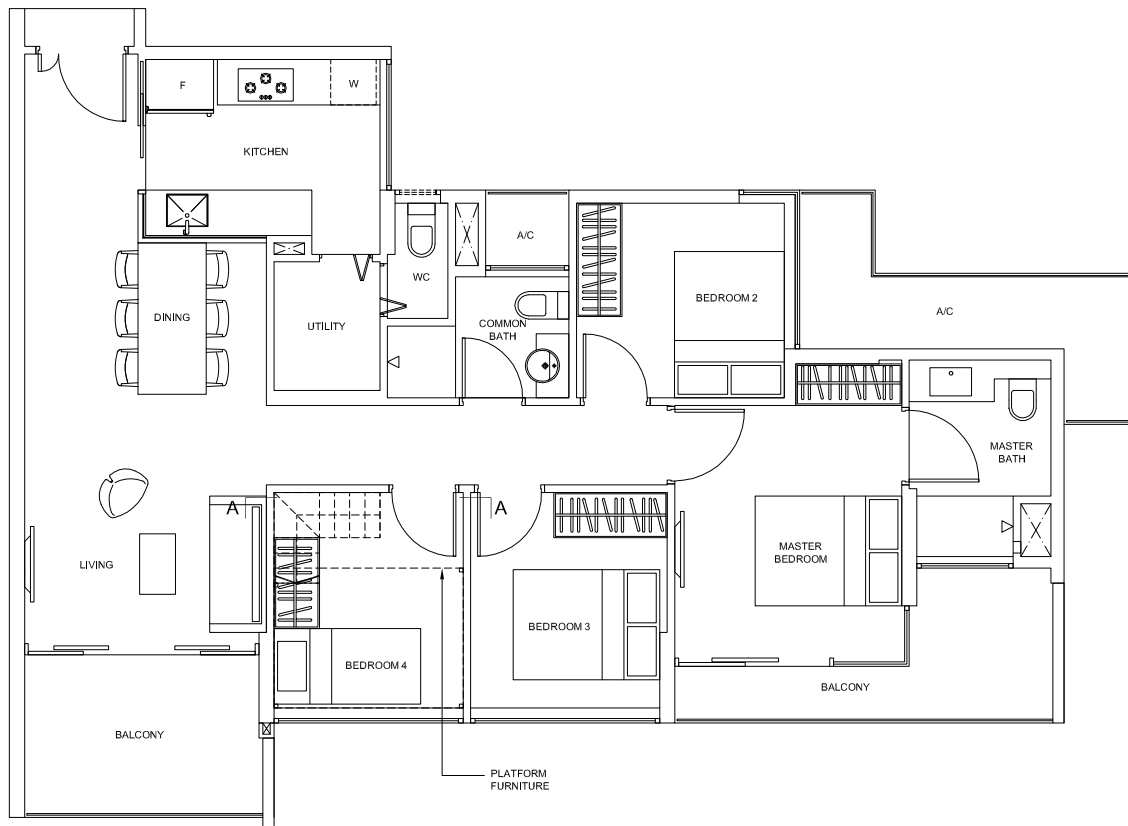


**NOTE:**  
 + isometric views have excluded railings drawings  
 Plans are subject to change as may be required or approved by the relevant authorities. These are not drawn to scale and are for the purpose of visual presentation only. Indicated areas are estimates only and subject to final survey.

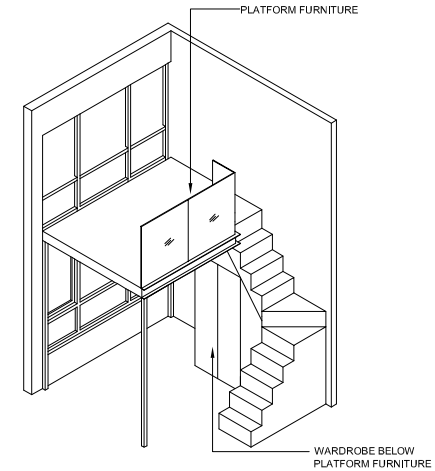


# 4-Bedroom

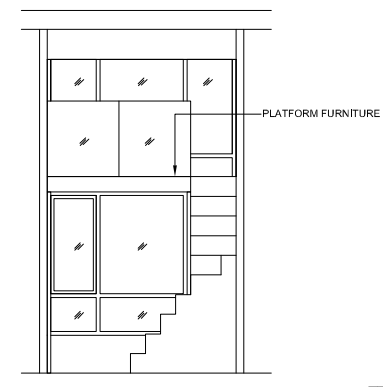
**TYPE D-PH**  
 Area: 109 sq m (include 8 sq m A/C LEDGE, 13 sq m BALCONY)  
 Unit(s): #14-10, #14-19



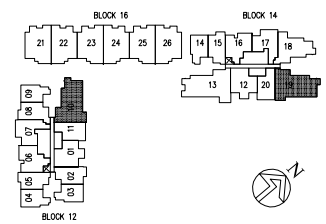
PLATFORM FURNITURE



ISOMETRIC VIEW +



SECTION A-A



**NOTE:**  
 + isometric views have excluded railings drawings  
 Plans are subject to change as may be required or approved by the relevant authorities. These are not drawn to scale and are for the purpose of visual presentation only. Indicated areas are estimates only and subject to final survey.

# 5-Bedroom

## TYPE E

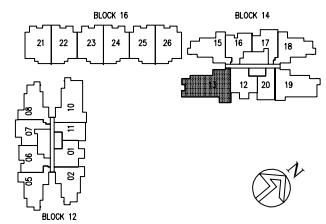
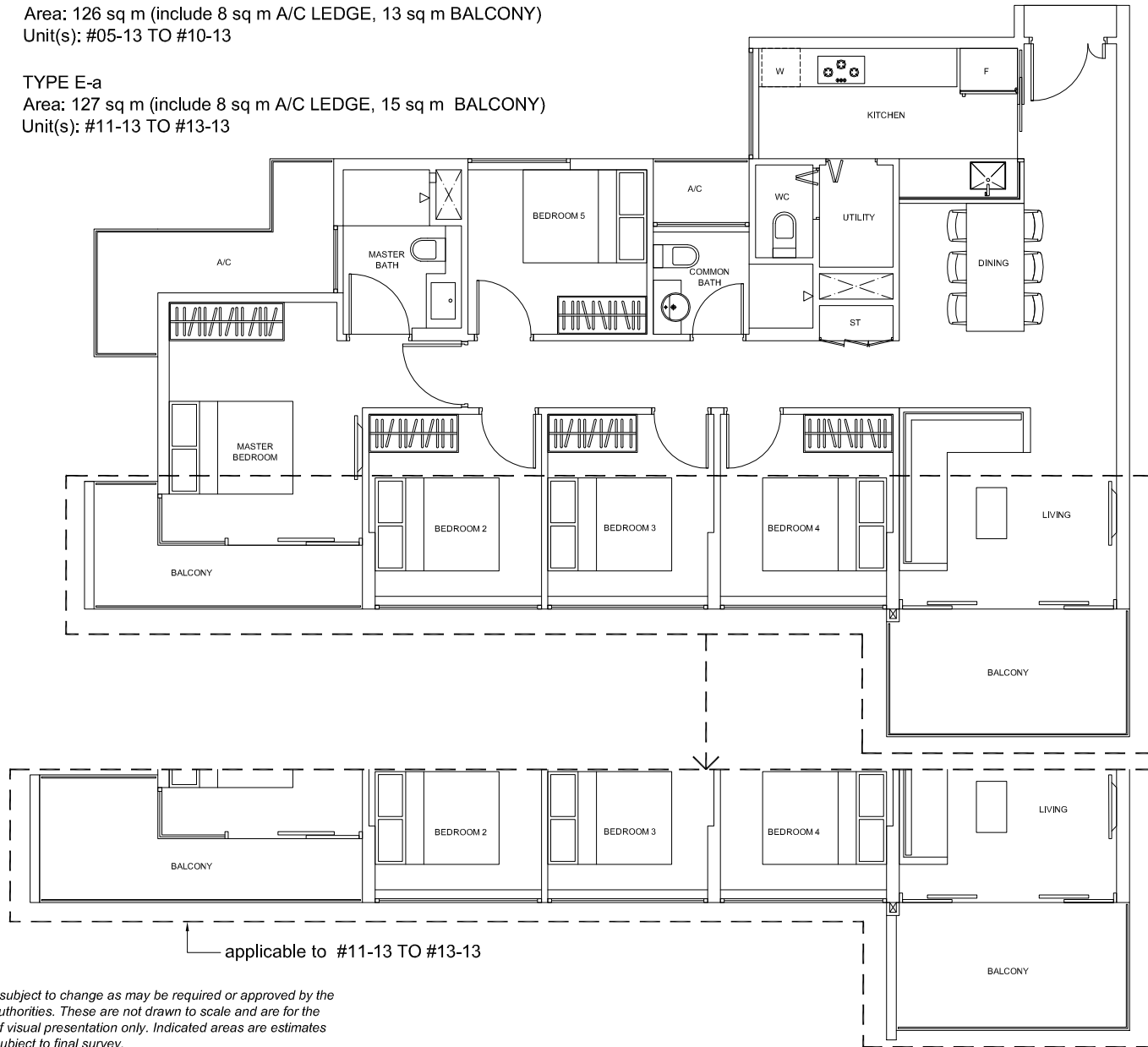
Area: 126 sq m (include 8 sq m A/C LEDGE, 13 sq m BALCONY)

Unit(s): #05-13 TO #10-13

## TYPE E-a

Area: 127 sq m (include 8 sq m A/C LEDGE, 15 sq m BALCONY)

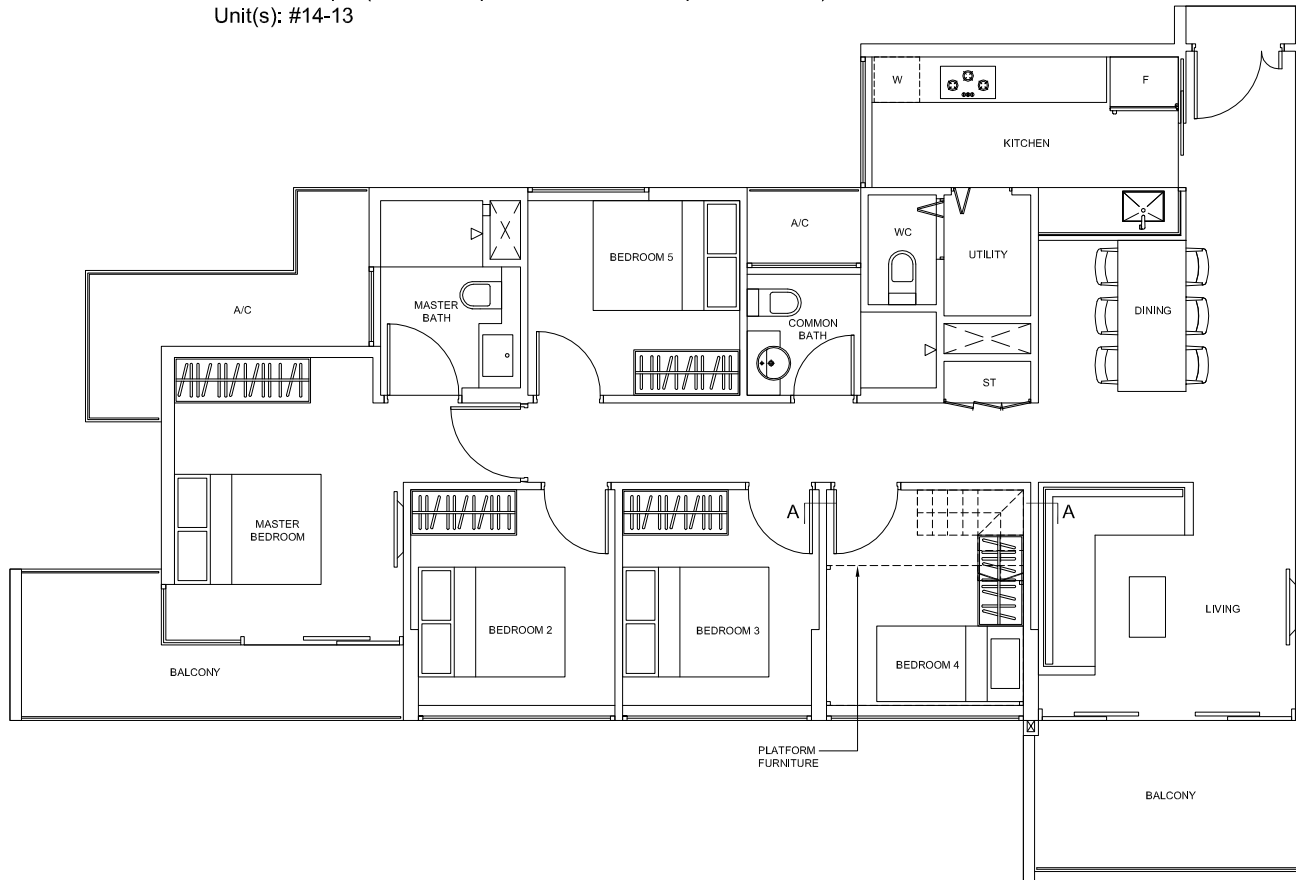
Unit(s): #11-13 TO #13-13



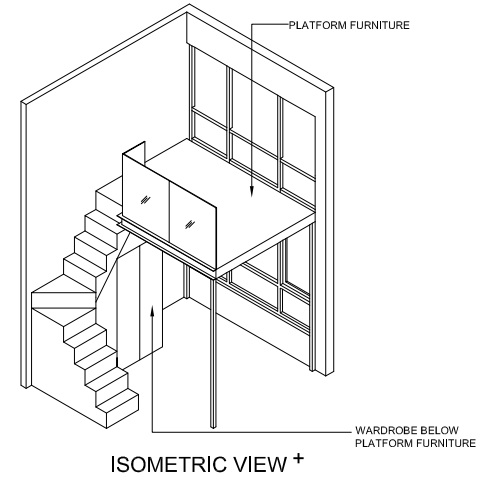
Plans are subject to change as may be required or approved by the relevant authorities. These are not drawn to scale and are for the purpose of visual presentation only. Indicated areas are estimates only and subject to final survey.

# 5-Bedroom

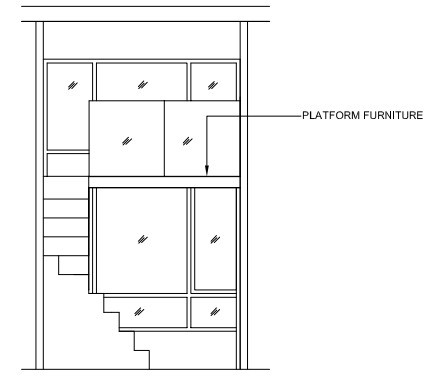
TYPE E-aPH  
 Area: 127 sq m (include 8 sq m A/C LEDGE, 15 sq m BALCONY)  
 Unit(s): #14-13



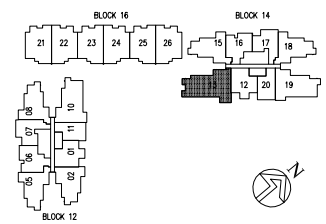
PLATFORM FURNITURE



ISOMETRIC VIEW +



SECTION A-A



**NOTE:**  
 + isometric views have excluded railings drawings

*Plans are subject to change as may be required or approved by the relevant authorities. These are not drawn to scale and are for the purpose of visual presentation only. Indicated areas are estimates only and subject to final survey.*

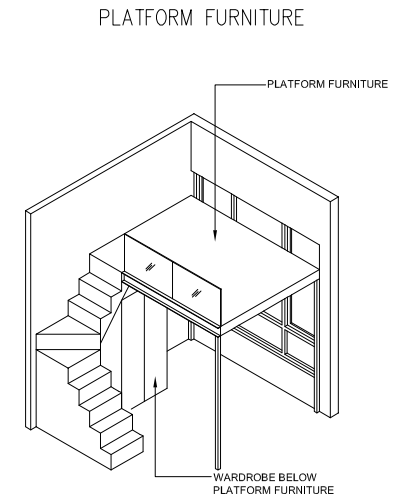
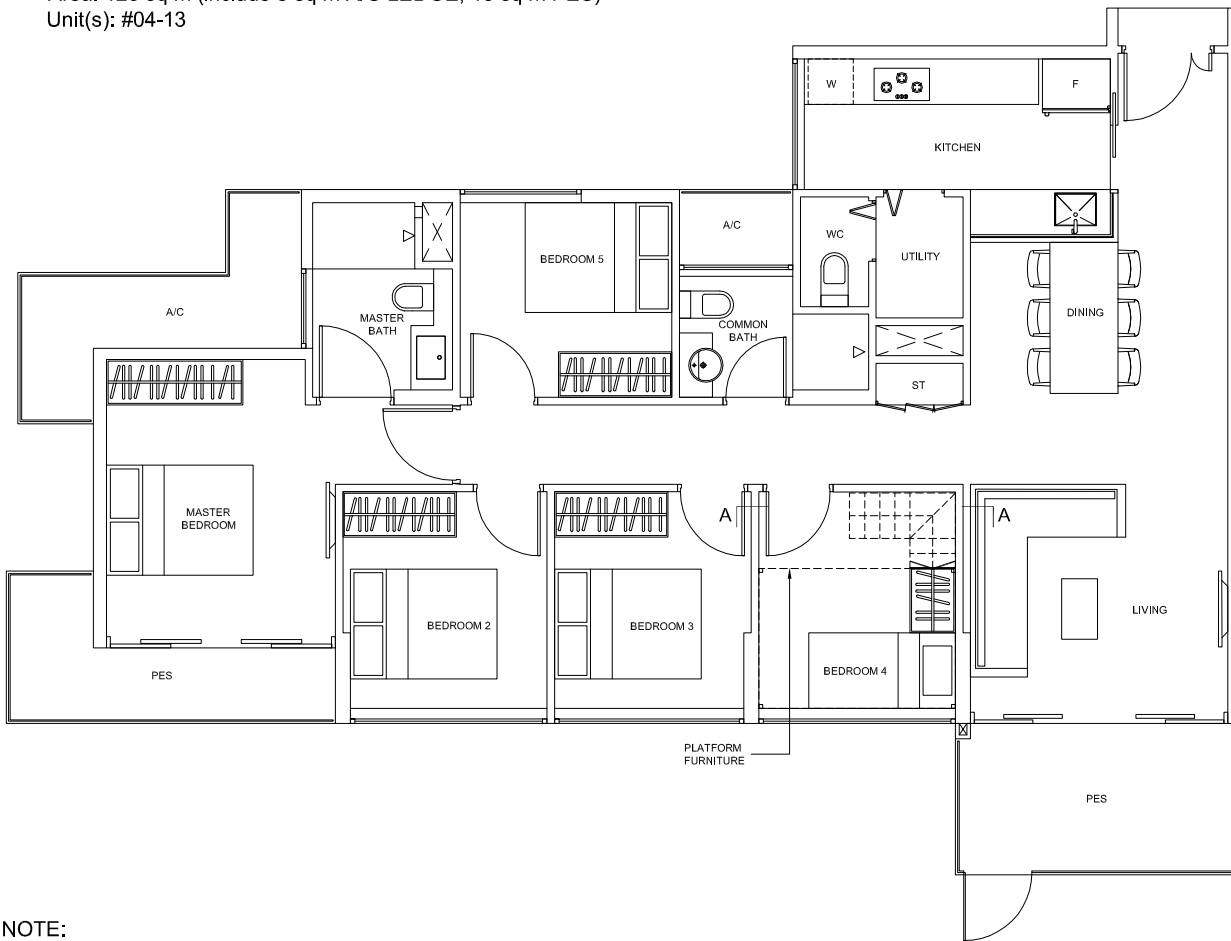


# 5-Bedroom

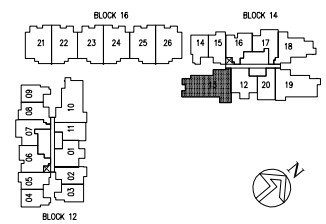
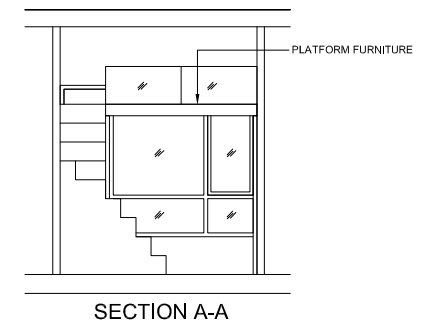
TYPE E-G

Area: 126 sq m (include 8 sq m A/C LEDGE, 13 sq m PES)

Unit(s): #04-13



ISOMETRIC VIEW +



**NOTE:**

+ isometric views have excluded railings drawings

*Plans are subject to change as may be required or approved by the relevant authorities. These are not drawn to scale and are for the purpose of visual presentation only. Indicated areas are estimates only and subject to final survey.*

**TYPE F-1**

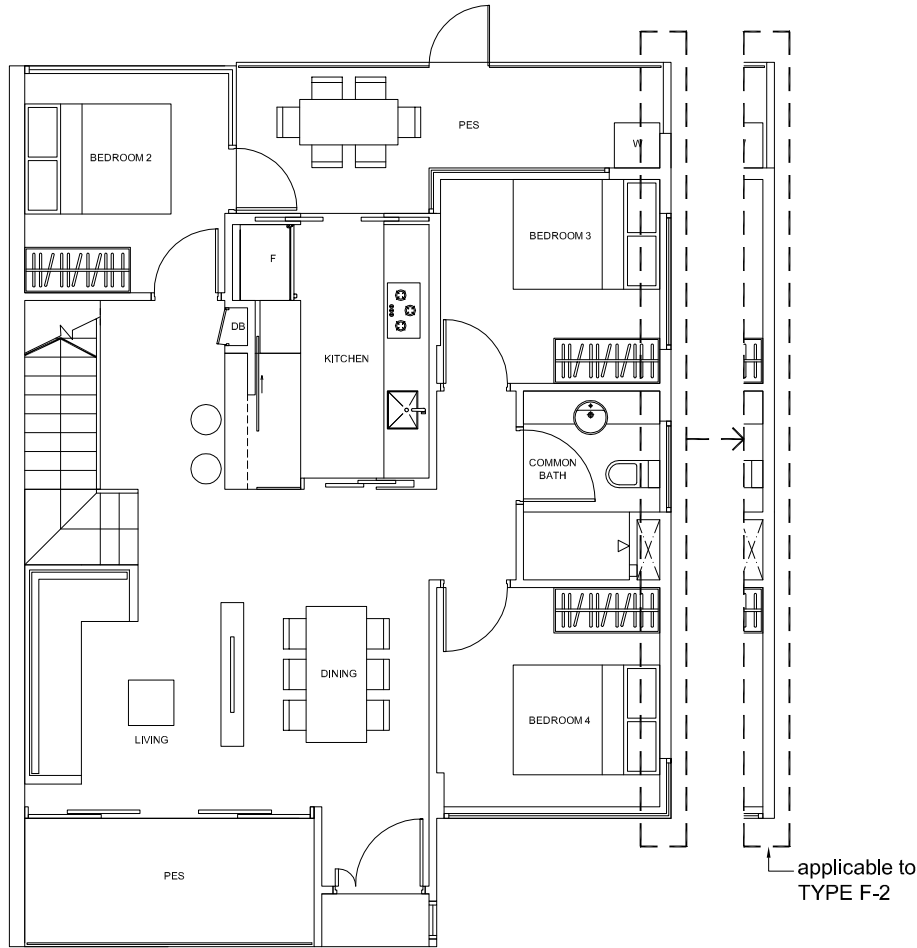
Area: 144 sq m (include 17 sq m PES, 8 sq m A/C LEDGE, exclude 31 sq m VOID)

Unit(s): #04-21\*,#04-26

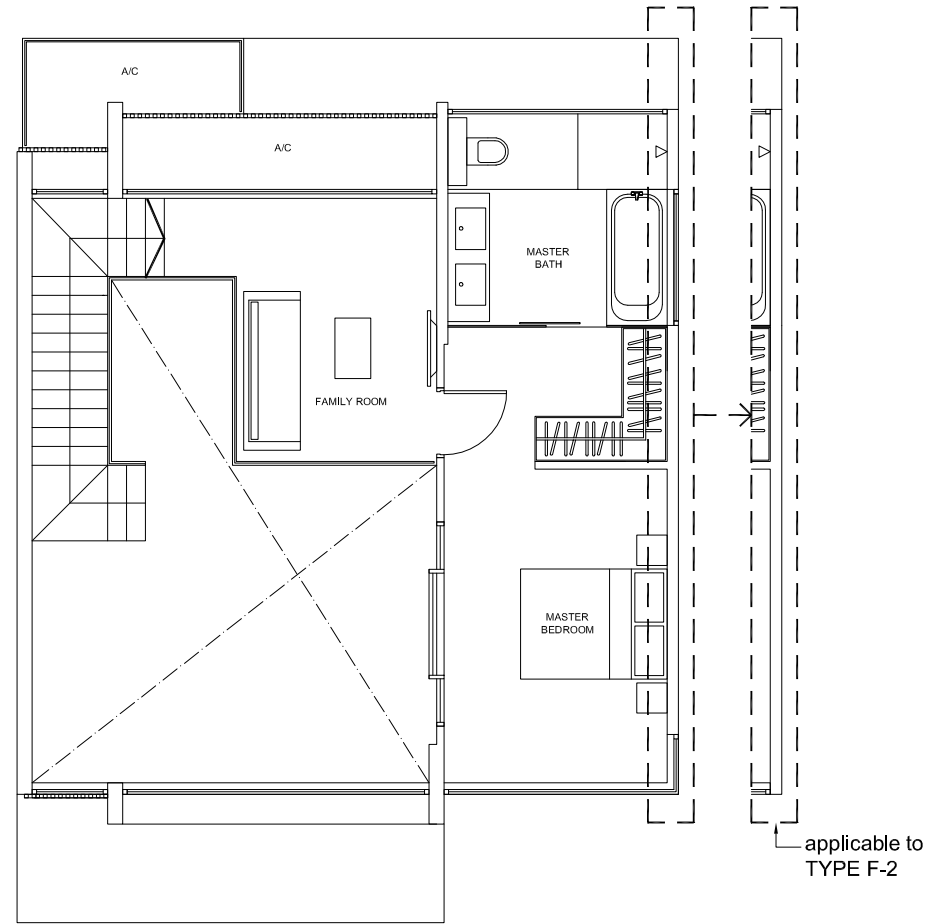
**TYPE F-2**

Area: 144 sq m (include 17 sq m PES, 8 sq m A/C LEDGE, exclude 31 sq m VOID )

Unit(s): #04-22, #04-23\*, #04-24, #04-25\*



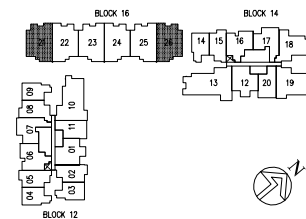
LOWER FLOOR LEVEL



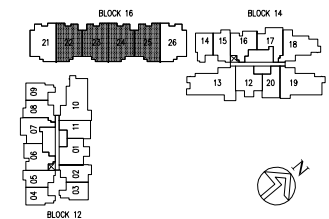
UPPER FLOOR LEVEL

**NOTE:**  
\*units in mirror image

*Plans are subject to change as may be required or approved by the relevant authorities. These are not drawn to scale and are for the purpose of visual presentation only. Indicated areas are estimates only and subject to final survey.*



applicable to type F-1



applicable to type F-2